

**Campaspe Shire Council**

# **Playground Strategy**

**May 2007**

**communityvibe**



# Table of Contents

1.0	Background.....	2
2.0	Literature Review .....	3
3.0	Demographic Profile of Campaspe .....	9
4.0	Playground Planning Principles .....	12
5.0	Playgrounds Categories .....	13
6.0	Current Playground Provision .....	15
7.0	Playground Provision Benchmarking .....	16
8.0	Tourist Use of Playgrounds.....	17
9.0	Existing Budget Allocations to Playgrounds.....	18
10.0	Promotion of Playgrounds.....	19
11.0	Development of New Playgrounds.....	19
12.0	Rationalisation of Existing Playgrounds.....	21
13.0	Fencing, Shade, Rubber Matting, Infrastructure and Equipment for People with Disabilities at Playgrounds .....	22
14.0	Other Opportunities for Play and Playgrounds.....	23
14.1	Skate Parks.....	23
14.2	Public Art.....	25
15.0	Management.....	25
15.1	Incident Reporting .....	25
15.2	Management of Other Playgrounds on Council Owned Land .....	26
16.0	Maintenance .....	27
16.1	Australian Standards .....	27
16.2	Inspections .....	28
16.2.1	Weekly Inspections.....	28
16.2.2	Quarterly Inspections.....	30
16.2.3	Annual Inspections .....	32
16.2.4	Qualifications of Staff.....	33
17.0	Shire of Campaspe Playground Inventory and Replacement Program.....	34
18.0	Other Public Playgrounds on Crown Land in the Municipality .....	56
19.0	Playground Equipment Replacement Program 2007-2016.....	59
20.0	Recommendations .....	62
21.0	Appendix.....	73
21.1	Costings with CPI Included .....	73

## 1.0 Background

Play spaces play an important part in the lives of many people during various stages of the life cycle. Younger children enjoy the opportunity for imaginative play and social interactions with their family and other young children. Older children enjoy the physical challenges presented by some items of play equipment and also enjoy the opportunities play spaces create to socialise with their peers. Both groups of young people enhance their motor skills, coordination and strength through their interactions with the various items of playground equipment. Parents, grandparents and carers also derive enjoyment from playgrounds as either an active participant or observer. Playgrounds therefore are seen as important avenue for the development of young people's cognitive, creative, social and physical development

Campaspe Shire Council is committed to providing recreation facilities and services such as playgrounds throughout the Shire to enhance the health and well-being and social connectedness of its residents. This Playground Strategy has been developed in order to provide strategic direction for the provision of playgrounds within the Shire of Campaspe over the next 10 years.

Campaspe Shire has a population in excess of 36,000 people, with the bulk of the population concentrated in the northern and eastern areas of the Shire. The main townships of Campaspe Shire are Echuca, Kyabram, Rochester, Tongala and Rushworth. During certain times of the year and for certain events, the population of Campaspe Shire expands considerably due to an influx of tourists.

There are currently **38** public open spaces with playground equipment that are owned, maintained or inspected by the Shire of Campaspe. This does not include equipment at preschools, private facilities and those that are not the responsibility of the Council.

The aim of this strategy is to:

- analyse the current level of playground provision
- develop an inventory of all playgrounds including a description of equipment and infrastructure and the lifespan of equipment
- provide comments on the current condition of playgrounds, based on discussions with maintenance crew, information contained within township plans and previous independent audits
- review the future demographic make up of the Shire of Campaspe
- identify management and maintenance issues and procedures
- make recommendations about the future development, distribution and standard of individual playgrounds
- make recommendations relating to management and maintenance of playgrounds
- develop a 10 year capital works program

## 2.0 Literature Review

A review of the current strategic planning documents of Council and other previous research was completed to identify key issues and recommendations relevant to the study. The key information from the review is summarised below.

### Playgrounds Report – Shire of Campaspe – June 2001

A playground report completed in-house by the Shire of Campaspe in 2001 categorised existing playgrounds into three standards: tourist, regional and neighbourhood. Rather than the usual replacement of equipment after a 15-20 year period, this report suggests turning over the equipment in tourist playgrounds every five years to keep providing new opportunities for visitors to the area. The report suggests that this superseded equipment could then be redistributed amongst neighbourhood playgrounds.

The report also rated the condition of playgrounds and the estimated lifespan, based on an external playground audit conducted in 2001. From this process it developed a series of recommendations with estimated costings for the period 2001/02 to 2006/07. The following table shows which of these recommendations have been completed and which recommendations are still outstanding:

Year	Playground	Works	Completed	Comments
<b>Year 1 – 01/02</b>	Jasmine St (Banyule Crt)	Replace swings	Yes	In 2000
	Welton Recreation Reserve	Replace equipment	Yes	
	Rochester Lions Park	Replace equipment	Yes	
	Girgarre Station St	Replace equipment	Yes	
	Bowen St (Bowen St)	Replace equipment	No	Completed in 04/05
	Mangan St - Tongala	Replace equipment	Yes	
<b>Year 2 – 02/03</b>	Murrumbidgee Place	Replace equipment	Yes	
	Hopwood Gardens Echuca	Replace equipment	Yes	
	John Pilley Reserve	Replace equipment	Yes	
	Bowen Street	Replace equipment	No	Completed in 04/05
<b>Year 3 – 03/04</b>	Lockington Lions Park	Replace equipment	Yes	
	Frederick St, Kyabram	Replace equipment	Yes	
	Wilson St, Echuca	Replace equipment	No	Completed in 2006
	Bowen St	Replace equipment	No	Completed in 04/05
	Pevensey / Murrumbidgee Place	Replace equipment	Yes	
<b>Year 4 – 04/05</b>	Echuca Caravan Park	Replace equipment	No	Not a Council playground
	Rochester Apex Park	Replace equipment	No	<b>Not completed</b>
	Stanhope Lions Park	Replace equipment	Yes	
	Bowen St	Replace equipment	Yes	
	Rankin St, Rochester	Replace equipment	Yes	

Year	Playground	Works	Completed	Comments
<b>Year 5 – 05/06</b>	Edis Park, Kyabram	Replace equipment	No	<b>Not completed</b>
	Drum St, Kyabram	Replace equipment	No	Will be completed in 06/07
	Tongala Lions Park	Replace equipment	Yes	
	Bowen Street	Replace equipment	No	Completed in 04/05
<b>Year 6 – 06/07</b>	Murrumbidgee Place, Echuca	Replace equipment	Yes	
	Wood St, Kyabram	Replace equipment	No	Playground not known
	Hibiscus Place, Kyabram (Prunus Crt)	Replace equipment	Yes	
	Girgarre Tennis Club (Winter Rd)	Replace equipment	Yes	In 2003

### **Echuca-Moama Recreation Plan (2006) Stratcorp Consulting**

The *Echuca-Moama Recreation Plan* was prepared as a joint initiative of both the Campaspe Shire Council (Vic) and the Murray Shire Council (NSW). The plan was designed to improve the efficiencies between the two Shires and to increase the range and quality of services available to residents within both townships and the wider region.

The Study Objectives were:

- To develop a Recreation Plan for the Echuca-Moama townships that was responsive to community expectations as well as being achievable, realistic and attainable within the Councils' budgetary frameworks.
- To develop clear guidelines regarding the level and standard of recreation services, programs and facilities that Council should provide for residents.
- To develop a 5 – 10 year strategy for the future provision of recreation services, programs and facilities within Echuca-Moama.
- To develop a clear definition of the role of both Councils in the planning, development and management of recreation facilities, services and programs.
- To integrate the *Echuca-Moama Recreation Plan* with the corporate goals, directions, policies and planning processes of both Councils.

#### Actions / Issues relating to this study:

This report recommended that Council needs to “Ensure that all new residential areas are linked to and integrated into the broad recreation networks, which comprises of open space, playgrounds, bicycle paths, footpaths, shared-use trails, etc.” Accompanying this recommendation is the comment that Council should investigate the possibility of establishing an open space corridor along the western and southern boundary of the subdivisions south of McSwains Road in Echuca West.

This report also recommended that Council prepare an Echuca-Moama Playground Strategy as well as a Shire-wide playground strategy.

Noted in the report was that of the 51% of household survey respondents who visit parks and open space areas, 44% visited parks to use playgrounds. Also, the most popular parks identified via household surveys in Echuca-Moama are Apex Park, Adventure Park and Hopwood Gardens

Several residents noted the need to develop skate park facilities in Echuca. The report suggested that Council “investigate the feasibility of installing skateable pieces of park furniture and ledges in break-outs along sections of sealed bike paths”

The report recommended the installation of water play features at Echuca War Memorial Aquatic Centre to improve leisure opportunities at that facility

### **Campaspe 2020 (2000)**

The Campaspe Shire Council has prepared this *20 Year Strategy* for the Shire as a whole and the individual townships to assist Council achieve the overarching Vision of ... *Building A Better Future*.

The objectives relating to this study are:

- To provide excellent recreational facilities and entertainment venues which enhance the prosperity and quality of life for both residents and visitors to the Shire.
- To promote well-being and quality of life through the provision of high class recreational and cultural services.

#### Actions / issues relating to this study:

There were no specific recommendations around the development of playgrounds; however, some recommendations suggesting improvements required to recreation reserves may incorporate improvements to play opportunities.

### **Shire of Campaspe Council Plan 2006-2010 (2006)**

The Council Plan identifies Councils goals and key activities in four key result areas:

- Social
- Environment
- Economic
- Organisation

In addition there are defined strategic objectives and strategies to achieve these in each of these key areas over a four year period. This plan also includes a four year Strategic Resource Plan which outlines the allocation of all the Council resources, non financial and financial to achieve the Council Plan.

Two of the four Key Result Areas of the Corporate Plan (Social and Environment) include Actions which have some relevance to the Playground Strategy.

Actions / issues relating to this study:

Social - Campaspe will provide leadership, resources and services to ensure a prosperous, sustainable, creative and vibrant community that enhances the quality of life and wellbeing of all:

Enhance the health and wellbeing of residents

- Develop and support programs and activities that provide people with opportunities to be physically active
- Promote and facilitate access to and participation in arts, leisure and recreational activities
- Develop, support and provide health promotion and prevention programs that help improve people's health and wellbeing

Environment - Campaspe will provide leadership, resources and services to secure a sustainable environment that balances rural, urban, social, recreational, economic and environmental demands.

Protect and enhance the built environment

- Build and maintain accessible and safe infrastructure that meets the ongoing needs of the community
- Create accessible, attractive and connected neighbourhoods and open spaces

### **District Community Plans**

The process to develop *District Community Plans* for the communities across the Shire is facilitated by Council's Community Development Officer in collaboration with local residents and community groups. Plans are reviewed on an annual basis and the recommendations for playground related projects and initiatives contained within the plans are outlined as follows:

Actions/ issues relating to this study:

- **Colbinabbin** & District Community Plan 2006/2007: plan mentioned a need to develop a BBQ area with seating near the playground; that a fence be placed around the playground and that the landscaped area is upgraded and regularly maintained
- **Corop** District Community Plan 2006/2007: the plan mentioned the need to install shade cover over the playground located at the community centre
- **Kyabram** and District Community Plan: no relevant recommendations
- **Lockington** Tourism Strategic Destination Plan 2006: report mentioned a need for a skate park in Lockington
- **Rochester** Community Plan 2006/2007 – report mentioned the need expressed by some residents to improve playground facilities at recreation reserves and in parklands. Two recommendations contained within the report articulate the need to establish a playground on the eastern side of Rochester and that all parks, including Rotary Park, are reviewed to limit duplication

- **Rushworth** and District Community Plan 2006: no relevant recommendations
- **Stanhope** and District Community Plan 2005 / 2006: report mentioned a need for “features that may increase activities at the pool”. This plan also mentioned that there is a desire by a small number of people to provide an upgraded playground near the tennis courts with shade.
- **Tongala** Community Plan 2006 / 2007: this plan mentions the desire of some residents to incorporate exercise stations along walking / cycling tracks; the need for shade sails at the playground
- **Wyuna** Recreation Reserve Plan 2006: articulated the need for a safe children’s play area at Wyuna Recreation Reserve, incorporating shade cloth and boundary fencing

### **Shire of Campaspe Universal Access Plan (2005)**

The *Campaspe Universal Access Plan* was been developed to assist Council in identifying opportunities that will enhance its services and facilities and eliminate barriers preventing participation by people with disabilities. The goals and strategies contained in the Plan have been based on extensive consultation with relevant Council staff and the Shire’s Rural Access Committee.

An important consideration in the formulation of the Strategy is the fact that Campaspe Shire has an ageing population, which has a strong correlation with increased loss of physical and sensory function, i.e. increased incidence of disability.

#### Actions / Issues Relating to this Study:

##### Goals:

- Increase recreational opportunities for people with a disability.
- Ensure the needs of people with a disability are considered in the provision of open space facilities.
- To ensure people with a disability are considered in future planning and development opportunities.

### **Shire of Campaspe Municipal Public Health Plan (2006-2009) Evolving Ways**

The *Campaspe Public Health Plan* has been developed to promote and the maximum well-being of people living in Campaspe Shire. The goal of most relevance to playgrounds is “To create accessible, attractive and connected neighborhoods and open spaces”

#### Actions / issues relating to this study

According to the community consultations conducted as part of the Municipal Public Health Plan, residents are generally satisfied with the quality of playgrounds, “however, people acknowledged that facilities and amenities need to be continually upgraded to ensure that they fully meet the accessibility standards”.

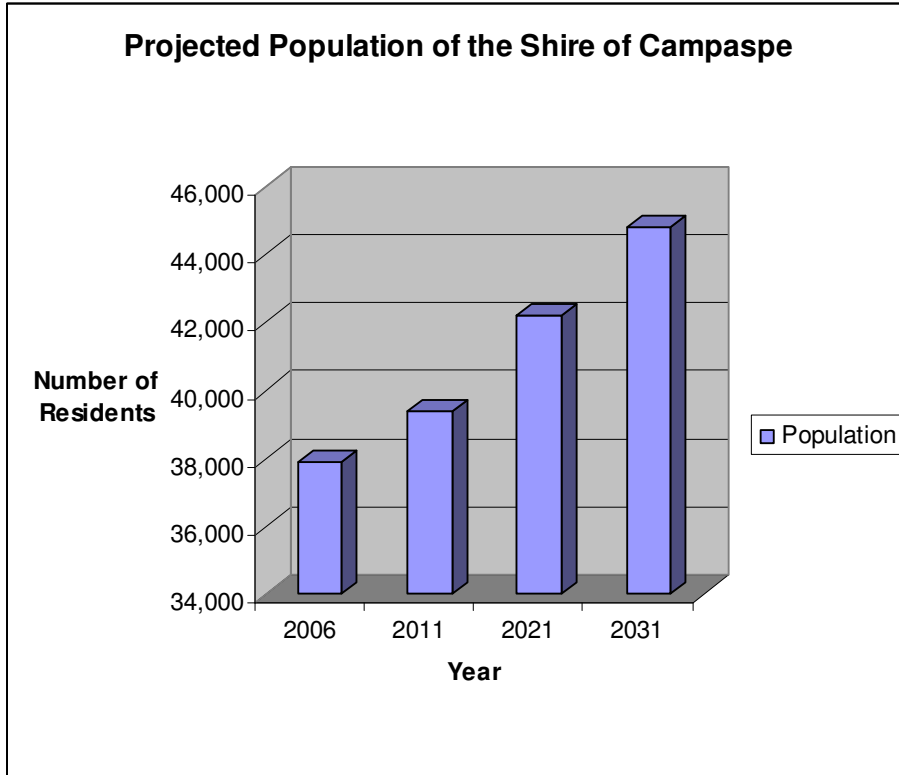


Two other important issues identified in this report relate to the need to provide shade at places where outdoor activities occur and the need to fence playgrounds in order to provide a safe and secure place for children to play.

### 3.0 Demographic Profile of Campaspe

The demographic profile of the Campaspe Shire was reviewed to identify population characteristics and trends, which are considerations when assessing options for the Campaspe Playground Strategy. The data used for analysis has been extracted from the Department of Sustainability and Environment – Know Your Area website.

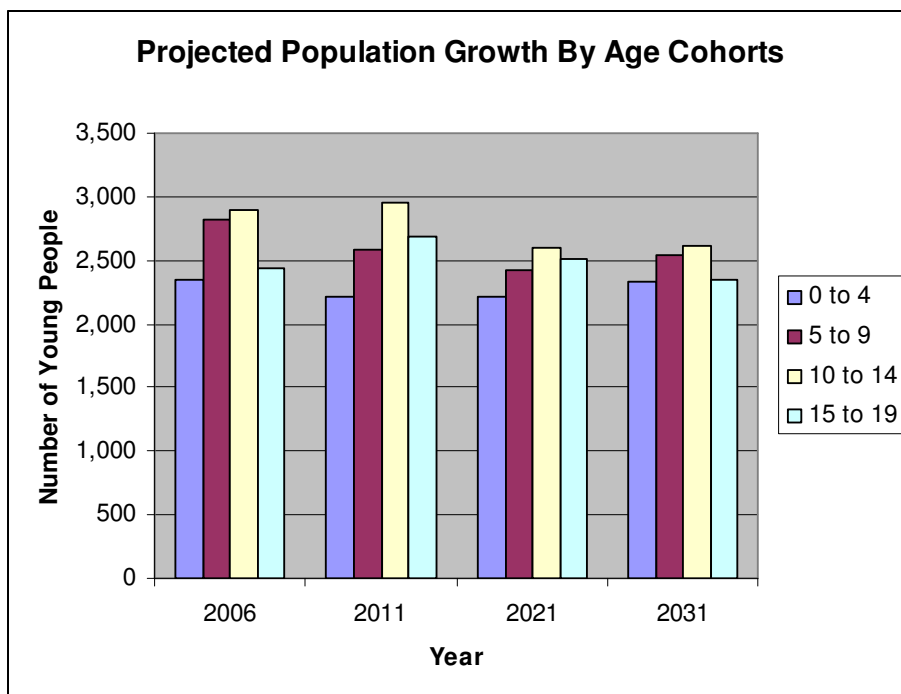
Between 2001 and 2031 the population of the Shire of Campaspe is projected to increase from 37,901 in 2006 to 44,827 people in 2031 – an increase of by 8,476 people.



The following graph shows the current number of young people in each town under the age of 15<sup>1</sup>:

Town	Number of Young People Under 15
Echuca	2,270
Colbinabbin	35
Corop	~6
Girgarre	64
Gunbower	47
Kyabram	1,304
Lockington	100
Nanneella	~10
Rochester	601
Rushworth	201
Stanhope	116
Tongala	281
Toolleen	~5
Torrumbarry	~3
<b>TOTAL</b>	<b>5,043</b>

The table below shows the projected population growth by age cohort for Campaspe Shire for the period 2001 – 2031. The figures indicate that the number of persons in each relevant age cohort will remain relatively constant.



<sup>1</sup> Campaspe Shire Council – website: [www.campaspe.vic.gov.au](http://www.campaspe.vic.gov.au)

The table below shows the projected population growth for Campaspe Shire across the Australian Bureau of Statistic's four statistical local areas for Campaspe Shire. Advice from Council staff is that Campaspe Shire does not have growth projections for each township and the Department of Sustainability and Environment do not have population forecasts at the micro level by township.

**Figure 1: Projected Population Growth across Statistical Local Areas**

<i>Statistical Local Area</i>	<i>2006</i>	<i>2011</i>	<i>2021</i>
<b><i>Echuca</i></b>	12,411	13,437	15,451
<b><i>Rochester</i></b>	8,819	9,037	9,414
<b><i>South</i></b>	3,822	3,806	3,743
<b><i>Kyabram</i></b>	12,879	13,133	13,622

As shown in the above table the projected population increase of 5,881 will be distributed across the following areas:

- The majority of growth (78.8%) will occur in the Echuca region which will see an increase of 4,364 persons.
- The remaining growth will occur in the Kyabram (15% or 884 persons) and Rochester regions (11.8% or 695 persons).
- The Campaspe south region is forecast to suffer a small decline in the total population.

## 4.0 Playground Planning Principles

The following principles have been developed in order to guide Council in its decision making processes relating to the development and provision of playgrounds within the Shire, noting that some of these items such as shade and rubber matting, due to resource limitations, will need to be rolled out over a period of years

Principle	Description
<b>Access</b>	To provide at least one playground in the municipality that is accessible to people with disabilities and mobility issues
<b>Equity</b>	To ensure that each town within the Shire with a population of over 100 has a minimum of one local playground located within its boundaries  To provide opportunities for both juniors (aged 3-7) and seniors (aged 7-15) to access at least one item of equipment in all playgrounds
<b>Diversity</b>	To provide a diverse range of age appropriate play opportunities and landscaping at different playgrounds throughout the municipality that encourage social interaction, imaginative play and the development of motor skills  To develop a rotation schedule for specific items of equipment in order to offer different play experiences across the municipality from time to time  To provide a minimum of one swing and one slide in each playground
<b>Health and Safety</b>	To provide natural shade and seating at all playgrounds for young people and their carers  To provide shade sails at one playground in each town  To provide a minimum of one fenced playground in each town
<b>Risk Management</b>	To ensure that all existing equipment and all equipment to be installed complies with the relevant Australian Standards  To ensure that playgrounds are managed, inspected and maintained according to industry best practice standards  To install rubber matting as the preferred form of softfall at regional and district playgrounds
<b>Best Value</b>	To ensure that land supplied through developer contributions is suitably located and of sufficient size to create a well utilised local playground  To ensure that designs of playground and softfall areas consider ongoing maintenance costs and the need to centralise equipment into one or two areas (if both junior and senior equipment are provided)  To ensure that playgrounds are rationalised if deemed appropriate due to insufficient need
<b>Innovation</b>	To work with members of the community to create unique and attractive play facilities which reflect the specific needs of young people and their carers - incorporating a range of different materials, landscaping and public art
<b>Integration</b>	To ensure that playgrounds are linked to cycling / walking paths and areas of public open space

## 5.0 Playgrounds Categories

There are three main categories of playgrounds provided within the Shire of Campaspe, each offering a variety of play opportunities. These categories are:

- Local
- District
- Regional (based in Moama)

Each category is explained in detail in the following table:

Category	Typical Features
<b>Local Playgrounds</b>	<p>Local playgrounds are located close to residential areas to provide basic play opportunities for the surrounding neighbourhood. These playgrounds typically:</p> <ul style="list-style-type: none"> <li>• Are small in size</li> <li>• Have a catchment area of 300 - 500 metre radius (taking into consideration barriers such as major roads, rivers, etc)</li> <li>• Provide a basic level of equipment</li> <li>• Feature seating / picnic tables, bins and shade</li> <li>• Cost approximately \$10,000 to replace (based on 2006 figures from Council)</li> </ul>
<b>District Playgrounds</b>	<p>District Playgrounds provide a wider variety of play experiences than local playgrounds and cater for a broader range of ages. These playgrounds, which are positioned to service a number of neighbourhood areas, typically:</p> <ul style="list-style-type: none"> <li>• Are reasonably large in size</li> <li>• Feature a variety of play equipment suitable for a number of age groups and ability levels</li> <li>• Are located in close proximity to large open space areas where possible and feature areas of open space within the playground area to encourage informal active recreational pursuits</li> <li>• Service a number of local neighbourhood areas</li> <li>• Have a catchment area of 500m - 2km radius</li> <li>• Act as a local facility for people living within a 500 metre catchment zone</li> <li>• Feature drinking fountains, seating / picnic table, bins, BBQ, shade, security lighting and car parking</li> <li>• Cost in the vicinity of \$25,000 to replace (based on 2006 estimates)</li> </ul>
<b>Regional Playgrounds</b>	<p>Regional Playgrounds provide a variety of play experiences for a number of age and ability levels. Regional playgrounds are supported by a range of associated facilities that allow for multiple hour visits and are well located to service a number of districts. These playgrounds typically:</p>

Category	Typical Features
	<ul style="list-style-type: none"> <li>• Are located in towns with a population of over 10,000</li> <li>• Have a catchment of an entire town plus surrounding townships</li> <li>• Feature a variety of play equipment for all ages and abilities</li> <li>• May include facilities for people with disabilities</li> <li>• Are located in close proximity to large open space areas</li> <li>• Provide greater play opportunities intended for multiple hour visits</li> <li>• Are highly accessible</li> <li>• Provide areas of open space to allow for informal recreational activities such as kite flying, cricket, ball throwing, ball kicking, etc</li> <li>• Retain natural environmental features such as trees, hills, creeks, etc</li> <li>• Feature associated infrastructure such as seating; shade; toilets (including an accessible toilet for people with disabilities / family toilet); pathways; adequate bins; security lighting; drinking fountains; BBQ and picnic facilities; car parking and connections to cycling / walking tracks</li> <li>• Cost approximately \$100,000+ to replace (based on 2006 figures)</li> </ul>

Given the fact that a regional playground already exists in Moama, Council holds the position that there does not need to be a regional playground established in Echuca, or elsewhere in the municipality. It is understood that Murray Shire may undertake a playground strategy in the 2007/08 financial year.

## 6.0 Current Playground Provision

There are currently **38** playgrounds located in the Shire of Campaspe that are located on Council owned land and managed by Council (excluding playgrounds located at childcare centres, pre-schools, schools as well as playgrounds on Crown Land). These Council owned and managed playgrounds are located in the following areas of the municipality:

<b>Town</b>	<b>Population</b>	<b>No. of Playgrounds</b>	<b>Ratio</b>
<b>Colbinabbin</b>	120	1	120:1
<b>Echuca</b>	10,717	10	1072:1
<b>Girgarre</b>	214	1	214:1
<b>Gunbower</b>	283	1	283:1
<b>Kyabram</b>	5,774	11	525:1
<b>Ky Valley</b>	<50	1	50:1
<b>Lockington</b>	400	3	133:1
<b>Rochester</b>	2,624	5	525:1
<b>Rushworth</b>	1,001	2	501:1
<b>Stanhope</b>	514	1	514:1
<b>Tongala</b>	1,179	2	590:1
<b>Other</b>	13,537	0	13,537:0
<b>TOTAL</b>	<b>36,363</b>	<b>38</b>	<b>957:1</b>

NB: Where the population is not known, it has been assumed that the population is less than 50 and calculated out at a rate of 50 people (although the actual figure is likely to be much less than 50). Also, these figures only take into account the number of people living in each town – they don't consider issues such as visitors or larger catchment areas

Based on the desire to have a minimum of 1 playground in each town of over 100 people and to assume a ratio of one playground per 705 people (which is the average rate of playground provision amongst 12 regional and rural municipalities in Victoria as well as Murray Shire), it would appear that all areas are well catered for, except Echuca, which currently has an undersupply of playgrounds. Lockington has a much greater ratio of playground provision than other towns in the municipality; hence it is recommended that Clare Street playground is reviewed with the possibility of rationalisation. Several other areas also appear to be over-serviced and according to maps of townships, some towns, particularly Kyabram, have an abundance of playgrounds in certain parts of the town. This over-supply in certain areas needs to be addressed so that other areas within towns or within the municipality can be better serviced.

An inventory has been compiled as part of this project (refer to appendix), providing information on:

- Name of playground
- Address of playground
- Ownership of land
- Type of equipment
- Manufacturer
- Date of purchase
- Value at purchase
- Remaining lifespan
- Classification
- Age group
- Type of softfall
- Other infrastructure
- Usage levels
- Additional comments



## 7.0 Playground Provision Benchmarking

To determine whether or not the Shire of Campaspe has more or less playgrounds per capita than other local government authorities, a comparison has been made between a number of other municipalities in Victoria as well as Murray Shire in NSW, using some statistics developed as part of the La Trobe Shire Council's Playground Strategy. This benchmarking exercise has been undertaken comparing the total population with the number of playgrounds and then determining the ratio of provision. The results are as follows:

<b>Council</b>	<b>Total Population</b>	<b>Playgrounds</b>	<b>Ratio</b>
<b>Campaspe</b>	36,363	38	957:1
<b>Murray Shire (NSW)</b>	6,800	17	400:1
<b>Ararat</b>	11,751	21	560:1
<b>La Trobe</b>	70,000	120	583:1
<b>Ballarat</b>	80,000	120	666:1
<b>Geelong</b>	200,000	279	717:1
<b>Horsham</b>	20,000	25	800:1
<b>Shepparton</b>	60,000	75	800:1
<b>Bendigo</b>	93,000	108	861:1
<b>Baw Baw</b>	37,000	60	616:1
<b>South Gippsland</b>	27,000	38	710:1
<b>Wellington</b>	43,000	51	843:1
<b>Kingston</b>	127,540	117	1090:1
<b>Moonee Valley</b>	105,615	87	1213:1
<b>Boroondara</b>	148,532	109	1362:1
<b>Bayside</b>	83,504	59	1415:1
<b>Glen Eira</b>	117,199	42	2790:1

Based on this information, Campaspe Shire Council has a smaller number of playgrounds on a per capita basis than all of the rural and regional local government authorities involved in this benchmarking exercise, but a higher number of playgrounds on a per capita basis than metropolitan municipalities. Of the 12 rural and regional municipalities surveyed, the average ratio of playground provision is 704:1. If Campaspe Shire Council was to provide one playground for every 704 residents (noting that this figure does not include visitors to the area / tourists), then it would need to provide an additional 14 playgrounds throughout the municipality. It must be noted, however, that there are an additional eight playgrounds in the municipality on Crown Land that are not managed by Council. Also, a number of school playgrounds are used by the community after hours and both residents and visitors can access playgrounds across the river in Moama. Hence, based on these figures, Council may need to establish a maximum of 6 additional playgrounds if it is to provide one playground for every 704 residents.

## 8.0 Tourist Use of Playgrounds

Echuca is a major tourist destination for both international and domestic visitors. According to Echuca-Moama Visitor Information Centre, 1.8 million tourists visit Echuca-Moama each year, spending an average of \$150.20 per person per day and staying for an average of 2.26 nights. The busiest time for the area is from Boxing Day until the end of Easter. During this time many families with children visit the area and stay in local accommodation facilities, including caravan parks. A number of caravan parks are currently being purchased by multi-national corporations and facilities at these sites, including playgrounds, are being upgraded to relatively high standards. Both the regional playground in Moama and Hopwood Park playgrounds are popular with visitors, according to Echuca-Moama Visitor Information Centre.

From Easter through to Boxing Day, the prominent visitor demographic is couples between 45-64 years of age (38%) in search of 'indulgent' weekends of fine dining and spas. The majority of people in this group are unlikely to require access to playgrounds. The second most prominent age group are the 35-44 year olds (28%), who may still require access to playgrounds for their children or relatives.

Unfortunately statistics are not available regarding the number of visits to playgrounds by visitors to the area. However, as a comparison, a number of other 'tourist towns' in Victoria have been identified to determine the ratio of playgrounds in those areas. Results are as follows:

<b>Council</b>	<b>Total Population</b>	<b>Playgrounds</b>	<b>Ratio</b>
<b>Echuca</b>	10,717	10	1,072:1
<b>Anglesea</b>	2,203	2	1,102:1
<b>Castlemaine</b>	8,287	5	1,657:1
<b>Cowes</b>	3,571	2	1,786:1
<b>Daylesford</b>	3,415	4	854:1
<b>Inverloch</b>	3,742	3	1,247:1
<b>Lorne</b>	1,216	1	1,216:1
<b>Maldon</b>	1,231	1	1,231:1
<b>Torquay</b>	8,003	3	2,668:1
<b>Swan Hill</b>	9,771	18	543:1
<b>AVERAGE</b>			1,069:1

Whilst some of these towns are located in close proximity to other towns, and most are situated near beaches, rivers or natural features, based on this benchmarking exercise with other tourist towns, Echuca appears to be reasonably well catered for in terms of the *number* of playgrounds provided. However, this benchmarking exercise does not provide information about the quality and size of playgrounds of these playgrounds; the spread of playgrounds in each of these towns; the catchment of these playgrounds or the proximity of school or commercial playgrounds to Council managed playgrounds. Nor does it consider the location of other 'play' facilities in these areas such as skate parks and the proximity to 'natural playgrounds' such as beaches.

## 9.0 Existing Budget Allocations to Playgrounds

Council's Capital Works Program for the next five years allocates amounts of between \$54,368 and \$171,263 to playground works, as demonstrated in the following table:

Item	2007/08	2008/09	2009/10	2010/11	2011/12	Unprogrammed Works
Bowen St subdivision – development of large playground	0	10,000	0	0	0	0
Echuca West - playground development	20,000	0	0	0	0	65,000
Rubber softfall program	0	20,000	20,000	20,000	20,000	0
Playground shade program	20,000	20,000	20,000	20,000	20,000	30,000
Apex Park Echuca	35,000	0	0	0	0	0
Rankin St Rochester	3,000	0	0	0	0	0
John Pilley Reserve (Ky Fauna Park) – fencing	10,000	0	0	0	0	0
Echuca West – fencing	12,000	0	0	0	0	0
Lockington – fencing	8,000	0	0	0	0	0
Playground equipment replacement – various	37,263	23,000	21,225	25,000	0	0
Rochester Pre-school – playground upgrade	0	0	0	0	0	50,000
Hopwood Gardens Playground – shade cloth	0	20,000	0	0	0	0
Litter bins for reserves and playgrounds	10,000	0	0	0	0	0
Miscellaneous – balancing item	0	38,111	70,468	44,288	14,368	0
<b>TOTAL</b>	<b>155,263</b>	<b>131,111</b>	<b>131,693</b>	<b>109,288</b>	<b>54,368</b>	<b>145,000</b>

*NB: this table does not include other works such as park construction, sprinkler systems, road construction, etc also listed in the Playgrounds, Parks and Recreation section of Council's Proposed Capital Works List. Nor does it include items such as staff labour and other non-capital items, which are listed in Council's Revenue Budget.*

Council officers estimate that approximately \$2,500 is spent annually on staff time for routine maintenance of playgrounds sized 10m x 20m, with an additional \$500 per annum on unforeseen damages and audits. Hence approximately \$114,000 is spent on labour to maintain and audit Council's playgrounds each year. This figure can be broken down on a town by town basis:

Town	Population	No. of Playgrounds	Council labour costs	Cost per head of population to maintain playgrounds
Colbinabbin	120	1	\$3,000	\$25
Echuca	10,717	10	\$30,000	\$3
Girgarre	214	1	\$3,000	\$14
Gunbower	283	1	\$3,000	\$11
Kyabram	5,774	11	\$33,000	\$8
Ky Valley	<50	1	\$3,000	\$60
Lockington	400	3	\$9,000	\$23
Rochester	2,624	5	\$15,000	\$8
Rushworth	1,001	2	\$6,000	\$6
Stanhope	514	1	\$3,000	\$6
Tongala	1,179	2	\$6,000	\$5
Other	13,537	0	\$0	\$0
<b>TOTAL</b>	<b>36,363</b>	<b>38</b>	<b>\$114,000</b>	<b>\$3 (average)</b>

On a per head of population basis, the Ky Valley is very well serviced, as is Colbinabbin and Lockington. Whilst Colbinabbin and Ky Valley only have one playground managed by Council within their town boundaries, Lockington currently has three playgrounds. If the number of playgrounds in Lockington was able to be reduced from three to two, there would be a saving of \$3,000 annually. There is also potential to rationalise the number of playgrounds in Kyabram, which would provide a cost saving of \$9,000 annually should three playgrounds be decommissioned.

## 10.0 Promotion of Playgrounds

Currently there is no information available in the foyer at service centres regarding the location of playgrounds, nor any information on the Council website. Nor does the latest copy of the tourist publication "What's On" provide any information specifically on community base playgrounds (although it does have a section titled "Shady Spots" which provides information about some parks in the area). Unless people know the location of playgrounds and what unique experiences each play area has to offer, there is a low probability that the Shire's playgrounds will be used to their maximum capacity by residents or visitors. The development of suitable low-cost promotional material is likely to increase the use of existing playgrounds.

## 11.0 Development of New Playgrounds

The areas of highest growth in the municipality are Echuca, particularly in the west, and Kyabram. Rochester is also expected to experience some growth in future years. These are the areas that logically will see the development of new playgrounds in future years. As both Rochester and Kyabram are already well serviced in relation to the number of playgrounds, the only new playgrounds proposed are in Echuca. To address the shortfall of playgrounds in Echuca, a mapping exercise has been undertaken to determine potential locations. Sites and completion dates for proposed new local level playgrounds are:

- Lions Park (2007)
- Victoria Park (2009)
- Alton Reserve (2011)
- Banyule Reserve (2013)
- Campaspe River Reserve (2015)

When developing playgrounds in new residential areas, the following considerations should be made:

<b>Consideration</b>	<b>Details</b>
<b>Size of playground</b>	<ul style="list-style-type: none"> <li>Where possible, local playgrounds should be 4,000 sq metres, district playgrounds should be 6,000 sq metres and regional playgrounds should be 8,000 sq metres in order to cater for a range of formal and informal play opportunities</li> </ul>
<b>Location and accessibility of playground</b>	<ul style="list-style-type: none"> <li>Playgrounds should be easily accessible from housing and located close to schools, shops and sport and recreation areas.</li> <li>Walking / cycling tracks should provide linkages to the playground from homes, commercial centres and recreation facilities</li> <li>Playground should front on to at least one road and should have various pedestrian access points</li> <li>Car parking should be available close to the playground</li> <li>Vehicles should be able to access the playground for maintenance purposes and emergency services</li> <li>If the playground is located on a main road or close to other potential hazards such as lakes, consideration should be given to fencing all or part of the playground</li> </ul>
<b>Type of land</b>	<ul style="list-style-type: none"> <li>The land should drain well and not be prone to flooding.</li> <li>In order to cater for people of all abilities, at least part of the playground site should be relatively flat</li> <li>Land should be free of environmental, man-made and chemical hazards</li> </ul>
<b>Supporting Infrastructure</b>	<ul style="list-style-type: none"> <li>As a minimum, seating, shade and bins should be supplied in each new playground which serves the local area.</li> <li>District playgrounds as a minimum should generally have drinking fountains, seating / picnic table, BBQ, shade, security lighting and car parking</li> <li>Regional playgrounds should have seating; shade; toilets (including an accessible toilet for people with disabilities / family toilet); pathways; adequate bins; security lighting; drinking fountains; BBQ and picnic facilities; and car parking as a minimum</li> </ul>
<b>Design</b>	<ul style="list-style-type: none"> <li>Playgrounds should ideally be designed in partnership with community groups to ensure that appropriate items of equipment are chosen to provide relevant and quality play experiences</li> <li>The Crime Prevention through Environmental Design (CPTED) principles should be considered in the design of playground sites</li> <li>Sensitive and appropriate landscaping should be considered in order to provide an aesthetically pleasing playground, using non-allergenic materials and providing for positive interactions between users and the environment</li> <li>A letter must be supplied from the playground manufacturer following installation to confirm that the playground meets Australian Standards</li> </ul>
<b>Funding</b>	<ul style="list-style-type: none"> <li>Developer contributions should be used to fund the development of new playgrounds in new residential areas</li> </ul>

## 12.0 Rationalisation of Existing Playgrounds

From time to time it will be necessary for Council or community groups to rationalise a playground. Rationalisation of playgrounds occurs for a number of reasons such as:

- Number of young people in a certain area has declined
- A larger district or regional playground has been developed nearby which includes the catchment of the original playground
- Playground equipment is no longer considered useable or safe and there is insufficient funding to replace equipment (this may sometimes occur on Crown Land where a committee of management or a sports club cannot afford to replace ageing equipment)
- The site on which the playground exists is considered to be unsafe
- A particular area or town is considered to have an oversupply of playgrounds based on ratios of provision and catchment areas

Should any of the conditions above occur, Council should consult with local residents to explain the reasons why the playground will be decommissioned, relocate any salvageable equipment to another playground and provide information on other alternative play options to residents. The preference is for playgrounds proposed for rationalisation, to be decommissioned when the existing equipment has reached the end of its lifespan.

It is important that the land on which the decommissioned playground was situated, remains as public open space, wherever possible. Similarly, where the community is keen to retain the playground proposed for rationalisation, Council could, at its own discretion, relinquish its management and maintenance responsibilities by appointing a community based committee of management to look after the playground, should the community wish to take on this role.

Two towns in which rationalisation is possible are Lockington and Kyabram. Each of these towns could be considered over-serviced in relation to the number of playgrounds, when compared with the Shire and state average. By relinquishing management and maintenance of one of the three playgrounds in Lockington, all residents of the town will still have access to a playground within a 400 metre radius, and Council would save up to \$3,000 annually on maintenance costs. A greater focus could then be made on developing the Apex Lions Park to a higher standard. Similarly in Kyabram, the mapping exercise undertaken shows an over-supply of playgrounds in the north of the town, and to a lesser degree, in the west. By relinquishing the management and maintenance of four playgrounds in the town and developing a new playground at Northern Oval, the majority of Kyabram residents will still be able to access a playground within a 400 metre radius and Council will save an estimated \$9,000 per annum.

If a playground is to be rationalized, it will not happen until the equipment in that particular park reaches the end of its lifespan. In most instances, the equipment in the playgrounds under review: Clare St (Lockington); and Frederick St, Crow Court, Glass Court and Prunus Court (Kyabram) will not reach the end of their lifespan for at least another five years.

## **13.0 Fencing, Shade, Rubber Matting, Infrastructure and Equipment for People with Disabilities at Playgrounds**

Fences are placed around specific playgrounds in order to:

- Protect children from hazards outside the playground such as busy roads or waterways
- Provide a space that young people feel is their own
- To keep dogs and other wildlife from entering the playground

Council is keen to ensure that a minimum of one playground in each town is fenced to provide a greater level of safety for young people, particularly toddlers who may inadvertently stray onto a busy road. It is therefore recommended that one playground with a focus on juniors in each town is marked to become a fenced playground.

Shade, either in the form of natural shade from trees or in the form of shade sails / structures, is developed in playgrounds to protect children and their carers primarily from sun burn. Once again, Council is keen to ensure that a minimum of one playground in each town has protection from the sun in the form of shade sails / shade structures or from well established trees.

A variety of different types of softfall are used to minimize the impact of a fall at playgrounds. The most common type of softfall in Campaspe Shire is bark chips. In order to continue to provide a cushioned surface, Council also proposes to install rubber matting at district level playgrounds throughout the municipality over the next 10 years. This type of surface is relatively expensive to install, but is an effective form of softfall and significantly reduces maintenance costs.

In relation to infrastructure such as seats, bins and BBQs, it is recommended that an amount of money be set aside in the budget to ensure that these facilities can be upgraded as required.

The guiding principles developed as part of this project indicate that Council wishes “To provide at least one playground in the municipality that is accessible to people with disabilities and mobility issues”. A swing suitable for people with disabilities has been installed at John Pilley Reserve (Kyabram Fauna Park). It is also recommended that due to the size of the population in Echuca, that another swing be installed at Apex Park to cater for people with disabilities.

The following table identifies when specific playgrounds in the municipality are proposed to have fencing, shade sails / structures and rubber matting installed within the next ten year period:

Town	Playground	Shade Sail / Structure	Fence	Rubber surface
Colbinabbin	Colbinabbin Memorial Hall	2011	2011	
Echuca	Apex Park	2007	Already fenced	2007 and 2008
	Hopwood Gardens	2007	Already fenced	2010
	Echuca West	-	2007	-
	Parkview Drive	-	2007	-
Girgarre	Winter Road	Already has shade	2010	-
Gunbower	Apex Park	Good natural shade	2007	-
Kyabram	John Pilley Reserve	2014	2007	2014
	Jaycees Park	-	2007	-
Lockington	Apex Lions Park	Shade about to be installed	2007	-
Rochester	Rotary Park	2013	Already fenced	2013
Rushworth	Recreation Reserve	2016	2016	-
	Lions Park	-	-	Already has rubber mats
Stanhope	Lions Park	2007	2009	-
Tongala	Lions Park	2008	Already fenced	-

## 14.0 Other Opportunities for Play and Playgrounds

### 14.1 Skate Parks

Most playgrounds stop catering for young people around the time they reach 12 years of age. This group of young people is generally more interested in organized activities such as football, netball, tennis and cricket or unstructured activities such as skate boarding, inline skating, bike riding, dancing, etc. In order to cater for young people between 12 to 16 years of age, facilities such as rebound walls, basketball rings, fitness stations and skate facilities should be considered throughout the municipality.

There are currently three skate parks in the municipality (Kyabram, Rochester and Rushworth), with an additional facility planned for Tongala. There is also an existing skate park across the river in Moama. This skate park, which is used by skate borders, inline skaters and BMX riders, features a 6.6 foot quarter pipe, a fun box, a steep ramp and several grind poles.



**Figure 2: Moama Skate Park**



As a comparison, the City of Greater Bendigo features skate parks in McIvor Road, Elmore, Goornong and Strathfieldsaye. An additional skate park is being constructed in Eaglehawk, with the possibility of another neighbourhood skate park in Kangaroo Flat. Should the park in Kangaroo Flat proceed, there will be one skate park provided for every 2,837 members of the community aged between 5 and 17 years of age. The current ratio in the Shire of Campaspe (once the Tongala facility is established) is 1,767:1. Ballarat has 3,120:1; Shepparton has 3,836:1; and

Geelong has 3,409:1. It is understood that Council receives requests from young people periodically to develop a skate park in Echuca, however, given the close proximity of the Moama skate park and the current ratio of skate parks per person in the municipality, such a park is not likely to be justified at present. What may be justified, however, is the expansion of the Moama facility to incorporate a greater range of equipment. Whilst Campaspe Shire Council will not contribute funding to the further development of the Moama Skate Park, it may be able to offer letters of support to funding applications from Murray Shire to obtain additional equipment or may be able to offer some form of support to fundraising initiatives instigated by Murray Shire.

The Skate Facility Guide produced by Department of Sport and Recreation Victoria<sup>2</sup> recommends that the following issues need to be addressed when planning for skate parks:

Skate parks should be:

- Located a minimum of 100m from housing, but preferably 200m
- A minimum of 30m x 40m in size
- Located in close proximity to
  - Public transport
  - Public toilets
  - Public telephones
  - Cycling / walking tracks
  - Shops
  - Shade / shelter
- Visible from the road to allow for passive observation and high marketability
- Located in areas where young people naturally congregate
- Located in recreation or shopping precincts
- Located in places where there is likely to be minimal conflict with other users
- Located away from busy roads

<sup>2</sup> Sport and Recreation Victoria – “The Skate Facility Guide” (2001)

## **14.2 Public Art**

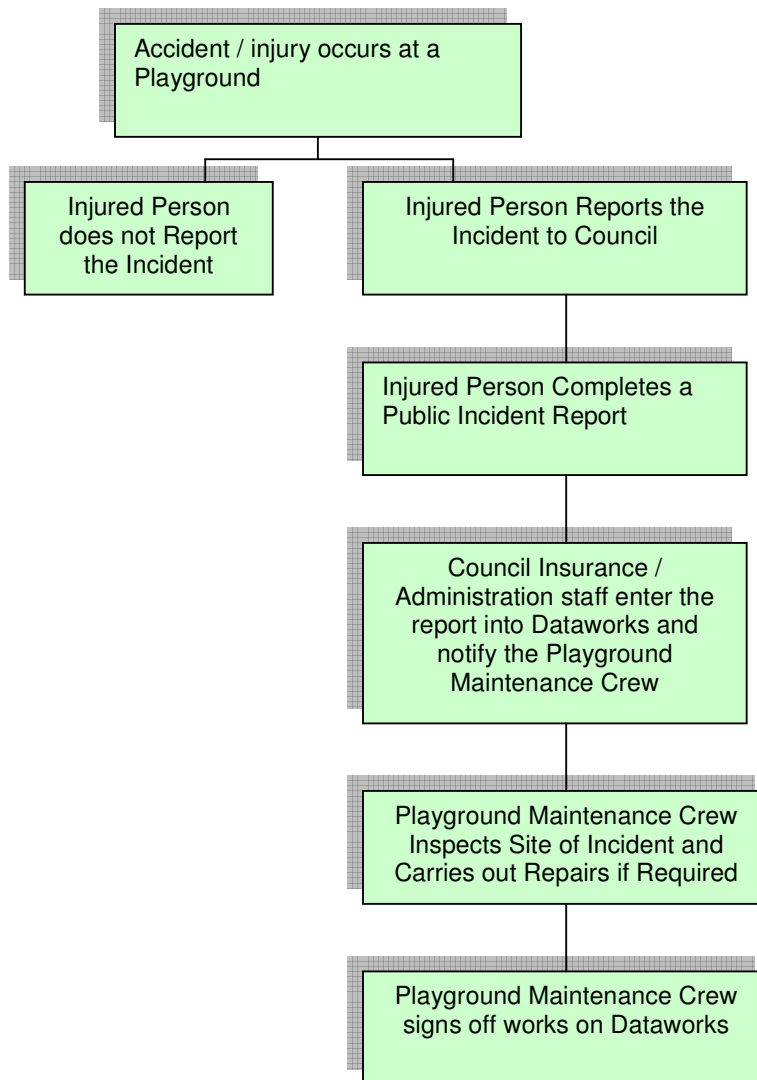
Public art in the form of murals, sculptures, etc can greatly enhance the aesthetics and individuality of areas of open space, including playgrounds. These pieces can form part of the play experience, such as a pirate ship or form part of the artwork in the park. Periodically funding is available for the development of works of art in public spaces, involving residents working collaboratively to develop works that reflect their area's unique identity, or through the commissioning of an artist in residence to work alone or with a groups to develop unique works of art to enhance the area of open space.

## **15.0 Management**

A key component of managing playgrounds is to ensure that regular inspections and follow up maintenance occurs. The maintenance of adequate records is also extremely important in the management of playgrounds.

### **15.1 Incident Reporting**

The recording of accidents and injuries at playgrounds for instance is paramount for insurance purposes. Council has developed a Public Incident Report specifically to record details of injuries and accidents. This links with the Dataworks System as well as Council's Occupational and Health Safety reporting systems. Council officers are currently modifying the system to ensure that it is able to deal effectively with incidents reported at playgrounds.



## 15.2 Management of Other Playgrounds on Council Owned Land

According to playground regulations, local government authorities are now required to maintain and inspect playgrounds at all Council owned and managed pre-schools and childcare centres on a quarterly basis. The Shire of Campaspe owns and manages the following pre-schools and childcare centres in the municipality:

CENTRE	STREET	TOWN
Girgarre Pre-School	School Road	Girgarre
Gunbower Pre-School	Wilson Street	Gunbower
Lockington Pre-School	Burns Street	Lockington
Rochester Pre-School	Fraser Street	Rochester
Tongala Pre-School	Nhill Street	Tongala

Each of these pre-schools must be inspected on a quarterly basis by qualified playground inspectors and must also undertake a more rigorous annual inspection. At present pre-

school staff inspect playgrounds on a monthly basis and long day care staff inspect their playgrounds daily.

This additional inspection requirement by Council's playground maintenance crew has an obvious impact on the amount of resources required. The maintenance and inspection of preschool playgrounds will be conducted by the crew on a fee for service basis. Each of these playgrounds will be inspected four times per year. It is estimated that each inspection will take approximately one hour. Pre-schools have budgeted for four inspections annually and childcare centre budgets will be revised shortly to include this additional cost.

The following pre-schools and childcare centres are located on Council land, but are not managed by Council:

- Echuca South Community Pre-School
- Echuca East Pre-School
- Echuca Central Kindergarten
- Colbinabbin Pre-School
- Rushworth Kindergarten and Childcare Centre
- Stanhope Kindergarten

Whilst Council has a responsibility to maintain the buildings located at these pre-schools and childcare centres, the managing bodies themselves are required to maintain the grounds and playgrounds as a condition of their lease.

## **16.0 Maintenance**

Playgrounds are required to be maintained on a regular basis to ensure that playground equipment, softfall areas and associated infrastructure are safe and provide a positive play experience for young people and their carers. One of the key components of the maintenance program is to systematically document inspections and the works required, as well as providing evidence that any necessary works have been completed.

### **16.1 Australian Standards**

Australian Standards have been developed to assist the process of design, construction, inspection and reporting related to playground equipment. Council's insurers also emphasise the importance of adhering to these guidelines. The following standards are of importance to Council:

- AS/NZS 4422 : 1996 Playground Surfacing
- AS/NZS 4486 : 1997 Playground Equipment
- AS 4685-1 – 2004 General Safety Requirements & test methods
- AS 4685-2 – 2004 Particular safety requirements & test methods for swings
- AS 4685-3 – 2004 Particular safety requirements & test methods for slides
- AS 4685-4 – 2004 Particular safety requirements & test methods for runways
- AS 4685-5 – 2004 Particular safety requirements & test methods for carousels
- AS 4685-6 – 2004 Particular safety requirements & test methods for rocking equipment

At present Council does not have access to any of these Australian Standards. It is strongly recommended that Council obtains all relevant standards relating to playgrounds, either electronically or in hard copy, and that updates are obtained as soon as they are developed.

## **16.2 Inspections**

As per Australian Standards and Insurance requirements, Council is required to undertake regular inspections of playgrounds. At present, Council conducts three different types of inspections – on a weekly, quarterly and annual basis. Discussions with Council's insurer, Civic Mutual Plus (CMP), indicate that the current system is adequate to meet insurance requirements. Therefore, it is recommended that the current system be continued.

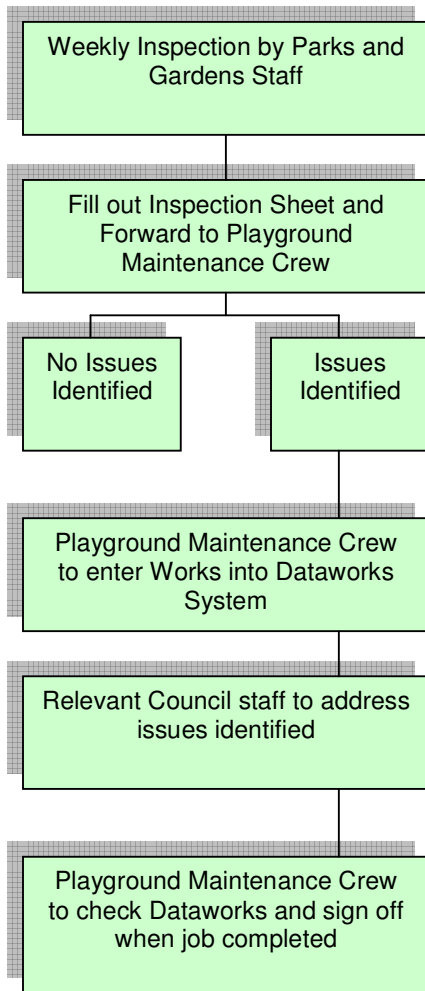
### **16.2.1 Weekly Inspections**

Council's Parks and Gardens staff conduct a visual inspection of playgrounds on a weekly basis to ensure that any rubbish or vandalism is removed and that any minor works are identified and reported to the playgrounds maintenance team.

Staff complete a checklist for each playground to ensure that the following areas are inspected:

- Play equipment damaged or broken
- Rubbish and / or debris, broken glass, etc
- Softfall
- Vandalism
- Playground furniture
- Other

The checklist asks the person filling out the form to state whether each of these areas is okay. If not okay, the staff member must identify the problem, specify what action has been taken on what date. The form also needs to be signed and dated. If there is any additional work, the staff member fills out a "Playground Reports Fix It Form" and submits this to the playground maintenance team for action. The Fix It Form asks the person filling out the form to state the date identified, the location, the problem, the date completed and relevant notes. The following diagram represents the process undertaken in weekly inspections should an issue be identified:



## **16.2.2 Quarterly Inspections**

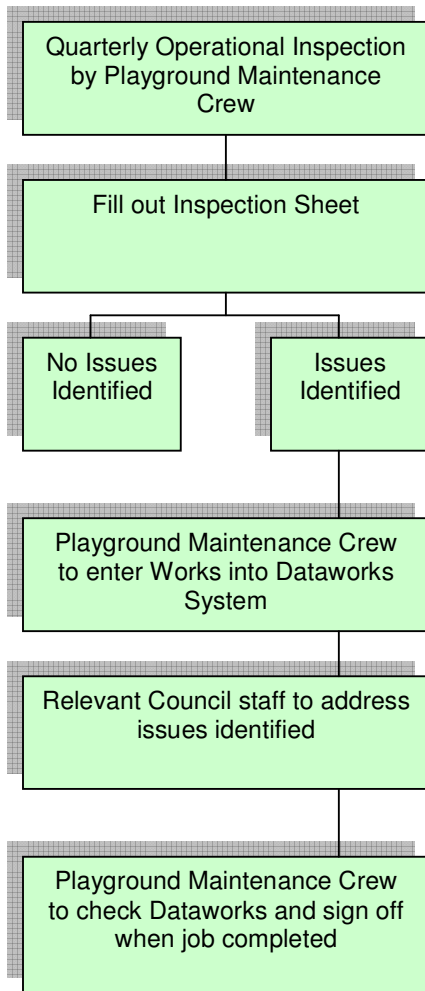
Quarterly operational inspections focus on checking the operation and stability of playground equipment, specifically minor wear and tear and vandalism issues. Council's playground maintenance crew currently carries out this function.

The Operational Playground Inspection Form used by Council asks the person filling out the form to list the location, date and time of the inspection, their name and the next date for an assessment of the playground. Specific factors that staff examine are:

- Access and entrance
- General site layout
- Surfacing
- Equipment – ropes, cables, nets, chains and tyres
- Combo unit
- Slide
- Spring rockers
- Rotating items
- Flying fox
- Sandpit

One addition that needs to be made to the form is to include swings.

The form asks the person filling out the documentation to identify the issue and explain why it is a hazard; determine the level of risk (very high, high, medium and low); and detail the action to be taken. This information is then transferred to the Fix It Form.





### **16.2.3 Annual Inspections**

Annual inspections are more detailed than both weekly and quarterly operational inspections and should ideally be carried out by an external specialist. Annual inspections should be carried out by a qualified level 3 playground inspector. Annual inspections should cover the following functions<sup>3</sup>:

#### **Site**

- Access
- Landscaping
- Planting
- Design safety

#### **Ancillary Items**

- Pathways
- Fences
- Gates
- Seats
- Signs
- Litter bins
- Other relevant items

#### **Equipment**

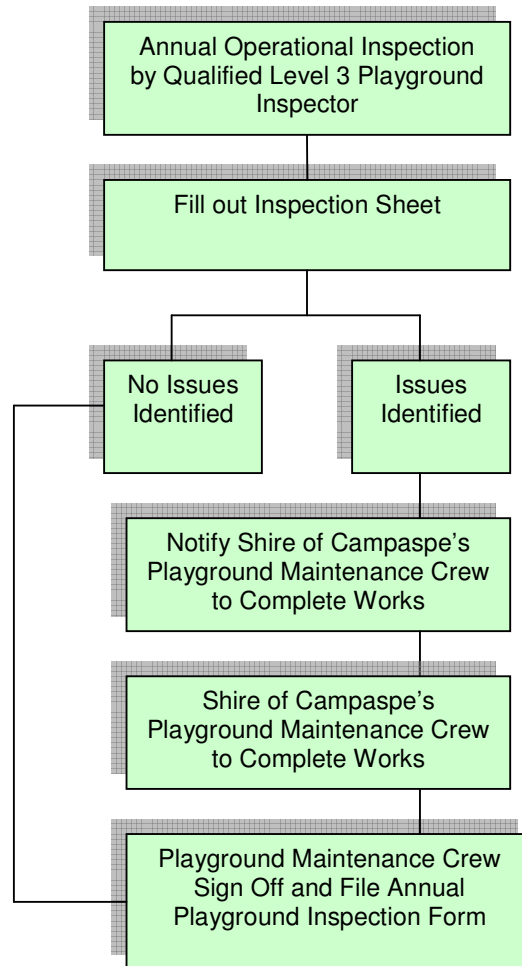
- Compliance with relevant standards
- Damage or deterioration caused by wear
- Mechanical or structural failure
- Vandalism
- Likely areas of future problems
- Accident prevention

#### **Surfacing**

- Compliance of surface areas
- Condition and work required

---

<sup>3</sup> Royal Society for the Prevention of Accidents - "Accredited Playground Inspector's Course – Operational Inspection – Level 2 – Pre-Course Material"



#### 16.2.4 Qualifications of Staff

To ensure that playgrounds are adequately inspected, it is recommended that relevant parks and gardens staff, such as the playground inspection team, are sufficiently trained to carry out this task. Two of the Shire of Campaspe's officers recently completed the Royal Society for the Prevention of Accidents (RoSPA) Accredited Playground Inspector's Course – Level 2. This training appears to equip staff well to undertake playground assessments.

It is also recommended that the Shire of Campaspe retains its membership of Playgrounds and Recreation Association of Victoria (PRAV) to keep up to date on playground developments, issues and standards. As mentioned previously, staff need to have access to relevant Australian Standards relating to playgrounds too.

## 17.0 Shire of Campaspe Playground Inventory and Replacement Program

Most playground equipment has a lifespan of approximately 20 years, depending upon usage levels, weather conditions and the material from which it is constructed. The inventory produced as part of this report identifies the year in which certain items of equipment were purchased. Once an item of playground equipment has reached 20 years of age it should be replaced with new equipment that meets the needs of that area and the users of the playground, assuming that the playground itself is not going to be rationalised. It is not possible to replace all of the equipment due for replacement in 2007 as Council has not budgeted for this amount. It is therefore suggested that a staged approach is adopted.

For playgrounds established and managed by Service Clubs, it is important that these clubs are consulted well in advance to discuss potential upgrade issues and costs, so that the service club can be involved wherever possible.

The following table provides a description of all playground equipment located at each of the playgrounds within the Shire of Campaspe; including when certain items of equipment need to be replaced:

Name of Playground	Address	Land Ownership	Type of Equipment	Manufacturer	Date of Purchase	Remaining Lifespan	Year to be Replaced	Classification	Age Group Jr (3-7) or Sn (7-12)	Type of Softfall	Other Infrastructure	Usage Levels (High, Medium, Low)	Comments
<b>Colbinabbin</b>													
Colbinabbin Memorial Hall		Council	Steel combo unit	Ausplay	1991	4	2011	Local	Senior	Bark Chips	Rotunda, seats	L	Requires some junior equipment. Including a swing. This should become the fenced playground in town.

<i>Name of Playground</i>	<i>Address</i>	<i>Land Ownership</i>	<i>Type of Equipment</i>	<i>Manufacturer</i>	<i>Date of Purchase</i>	<i>Remaining Lifespan</i>	<i>Year to be Replaced</i>	<i>Classification</i>	<i>Age Group Jr (3-7) or Sn (7-12)</i>	<i>Type of Softfall</i>	<i>Other Infrastructure</i>	<i>Usage Levels (High, Medium, Low)</i>	<i>Comments</i>
<b>Echuca</b>													
Apex Park	High Street	Council	Steel combo	Ausplay	1983	0	2007	District	Junior and senior	Bark Chips	Shelter, 3 BBQs, picnic seats, toilets, fence, seats	H	Very high usage. Infant and junior section of equipment is run down – needs evaluation and replacement. \$15,000 has been set aside in capital works budget for replacement of infant equipment in 2007/08. Rubber softfall is a high priority. Shade sail should be installed over infant section when equipment
			Whirling wheels	Miracle	1980	0	2007						
			German climber	Omnitech	2005	18	2025						
			Bounce-a-bout	Miracle	1986	0	2007						
			Double swing	Playsafe	2000	13	2020						
			Steel climber	Miracle	1987	0	2007						

Name of Playground	Address	Land Ownership	Type of Equipment	Manufacturer	Date of Purchase	Remaining Lifespan	Year to be Replaced	Classification	Age Group Jr (3-7) or Sn (7-12)	Type of Softfall	Other Infrastructure	Usage Levels (High, Medium, Low)	Comments
													replaced. Junior section needs to be replaced.
Barry Street	Barry Street	Crown	Steel combo unit – junior	Miracle	2000	13	2020	Local and shared with school	Junior and Senior	Bark Chips	Seats	M-H	This playground is well utilized as a result of shared use with school. Old fencing requires removal.
			Steel combo unit – senior	Miracle	2000	13	2020						
Central Park	Bennett Court	Council	Swings	Forpark	2005	18	2025	Local	Junior and Senior	Bark chips	Pathways, Fence	L	Relatively new park. Needs seating. This park has been prone to vandalism.
			Senior combo unit	Forpark	2005	18	2025						
			Junior combo unit	Forpark	2005	18	2025						
Echuca South Netball Complex	High Street	Crown	Steel combo unit	Ausplay	1991	4	2011	Local	junior	Bark chips	seats	L	Primarily only used when sporting events are held at the site.

<i>Name of Playground</i>	<i>Address</i>	<i>Land Ownership</i>	<i>Type of Equipment</i>	<i>Manufacturer</i>	<i>Date of Purchase</i>	<i>Remaining Lifespan</i>	<i>Year to be Replaced</i>	<i>Classification</i>	<i>Age Group Jr (3-7) or Sn (7-12)</i>	<i>Type of Softfall</i>	<i>Other Infrastructure</i>	<i>Usage Levels (High, Medium, Low)</i>	<i>Comments</i>
Hopwood Gardens	High Street	Crown	Steel combo unit	Miracle	1990	3	2010	District	Junior and senior	Bark chips	Seat, rotunda, drink fountain, pathways	H	Paddle steamer not easily accessible for people with disabilities. Ramp may not comply with gradient regulations. Rubber softfall to be installed. Shade cloth to be installed 08/09 according to capital works budget. Fenced park. Combo unit may be replaced in next few years subject to funding.
			Steel combo unit	Forpark	2003	16	2023						
			Double swing	Forpark	2003	16	2023						
			Tornado slide	Forpark	2005	18	2025						

Name of Playground	Address	Land Ownership	Type of Equipment	Manufacturer	Date of Purchase	Remaining Lifespan	Year to be Replaced	Classification	Age Group Jr (3-7) or Sn (7-12)	Type of Softfall	Other Infrastructure	Usage Levels (High, Medium, Low)	Comments
Murrumbidgee Drive	Murrumbidgee Drive	Council	Grand carousel	Miracle	1991	4	2011	Local	Junior and senior	Sand and bark chips	Picnic Tables	L	Fenced. Continual damage to gates. Sand softfall requires removal and needs to be replaced with bark chip softfall.
			Scale swing	Ausplay	1991	4	2011						
			Steel combo	Forpark	2003	16	2023						
			Double swing	Forpark	2003	16	2023						
Parkview Drive	Parkview Drive	Council	Steel combo	Forpark	2006	19	2026	Local	Junior and senior	Bark chips	-	L	Low usage park requiring minimal attention. As this area develops, it is expected that usage will increase considerably.
			Double swing	Forpark	2006	19	2026						
			Spring rocker	Forpark	2006	19	2026						
Garden Crescent	Pascoe Street	Council	Double swing	Not known	1980	0	2007	Local	Junior and Senior	Bark chips	Seats	L	Very run down playground. Requires evaluation for replacement and
			Monkey bars	Not known	1980	0	2007						

<i>Name of Playground</i>	<i>Address</i>	<i>Land Ownership</i>	<i>Type of Equipment</i>	<i>Manufacturer</i>	<i>Date of Purchase</i>	<i>Remaining Lifespan</i>	<i>Year to be Replaced</i>	<i>Classification</i>	<i>Age Group Jr (3-7) or Sn (7-12)</i>	<i>Type of Softfall</i>	<i>Other Infrastructure</i>	<i>Usage Levels (High, Medium, Low)</i>	<i>Comments</i>
													installation of slide. To be retained as a playground.
Towle Court	South Street	Council	Double swing	Not known	1980	0	2007	Local	Junior and senior	Bark chips	Seats	L-M	Located next to a school. Digger is to be replaced this year – equipment already purchased. Monkey bars need removal without replacing. Swings need replacement in the next 3-4 years due to low usage.
			Monkey bars	Not known	1980	0	2007						
			Steel combo	Playsafe	2001	14	2021						
			Twin rider	Playsafe	2001	14	2021						
			Log roll	Playsafe	2001	14	2021						
			Spring rider	Ausplay	1990	3	2010						
			Digger	Not known	1986	0	2007						
Wilson Court	Wilson Court	Council	Slide	Forpark	2006	19	2026	Local	Junior and senior	Bark chips	seats	L	Playground subject to high levels of vandalism. Seats and fence have
			Wave slide	Miracle	1981	0	2007						
			Steel combo	Forpark	2006	19	2026						



Name of Playground	Address	Land Ownership	Type of Equipment	Manufacturer	Date of Purchase	Remaining Lifespan	Year to be Replaced	Classification	Age Group Jr (3-7) or Sn (7-12)	Type of Softfall	Other Infrastructure	Usage Levels (High, Medium, Low)	Comments
			Double swing	Not known	1980	0	2007						been broken – need to be repaired / replaced with recycled plastic. Wave slide requires removal as it no longer complies with regulations.
			Rebound wall	Not known	1981	0	2007						
<b>Girgarre</b>													
Winter Road	Winter Road	Council	Swing - senior	Not known	1977	0	2007	Local	Junior and Senior	Bark chips	Picnic tables, toilets, rotunda, army memorabilia	L	Older equipment at end of lifespan. Replace all swing sets with one swing set containing a junior seat and a senior seat
			Swing – junior	Not known	1977	0	2007						
			Climbing frame	Not known	1977	0	2007						
			2 junior slides	Not known	1977	0	2007						
			Senior slide	Not known	1977	0	2007						
			Monkey bar	Not known	1977	0	2007						
			Steel combo unit	Allplay	2003	16	2023						
<b>Gunbower</b>													
Apex Park	Gunbower	Unknown	Double	Miracle	1983	0	2007	Local	Junior	Bark	Picnic	M	Concerns re

Name of Playground	Address	Land Ownership	Type of Equipment	Manufacturer	Date of Purchase	Remaining Lifespan	Year to be Replaced	Classification	Age Group Jr (3-7) or Sn (7-12)	Type of Softfall	Other Infrastructure	Usage Levels (High, Medium, Low)	Comments
	Island Road		swing										proximity of playground with Gunbower Creek – this needs fencing. Climbing frame of little use. Climbing frame and double swings need replacing.
			Spider Climber	Miracle	1983	0	2007						
			Twin rider	Miracle	1983	0	2007						
			Steel slide	Miracle	1983	0	2007						
<b>Kyabram</b>													
Banyule Court	Banyule Court	Council	Double swing	Playspace	2000	13	2020	Local		Bark chips		L	New equipment was installed to replace Bolt-a-log in 2006/07. Slide required. Retain park.
Crow Court	Crow Court	Council	Double swings	Miracle	1994	7	2014	Local	Junior and	Bark chips	-	L	Timber surrounds

<i>Name of Playground</i>	<i>Address</i>	<i>Land Ownership</i>	<i>Type of Equipment</i>	<i>Manufacturer</i>	<i>Date of Purchase</i>	<i>Remaining Lifespan</i>	<i>Year to be Replaced</i>	<i>Classification</i>	<i>Age Group Jr (3-7) or Sn (7-12)</i>	<i>Type of Softfall</i>	<i>Other Infrastructure</i>	<i>Usage Levels (High, Medium, Low)</i>	<i>Comments</i>
			Steel combo – small	Miracle	1994	7	2014		senior				need major works
Drum Street	Drum Street	Public Transport Corporation	Steel slide	Not known	1976	0	2007	Local	Senior	Bark chips	Picnic table	L	Scheduled for replacement in 2006/07. Usage is currently low due to age and condition of equipment, however as this playground is located along a shared path, it is recommended that additional equipment is developed in recognition of future demand.
			Double swings	Not known	1976	0	2007						
Edis Park		Council	Rock 'n'	Miracle	1995	8	2015	Local	Junior	Bark	BBQ,	M	Steel combo

Name of Playground	Address	Land Ownership	Type of Equipment	Manufacturer	Date of Purchase	Remaining Lifespan	Year to be Replaced	Classification	Age Group Jr (3-7) or Sn (7-12)	Type of Softfall	Other Infrastructure	Usage Levels (High, Medium, Low)	Comments
			Ride										is non-compliant and needs immediate removal. Two sets of swings need to removed, evaluated and replaced.
			Spring rider	Miracle	1995	8	2015						
			2 x Log double swings	Not known	1981	0	2007						
			Triple rider	Miracle	1994	7	2014						
			Steel combo	Home made	1981	0	2007						
Frederick Street	Frederick Street	Council	Bolt-a-log combo	Evans	1981	0	2007	Local	Senior	Bark chips	Seat	L	Remove Bolt-a-log combo. Evaluate usage of this playground for potential rationalisation. If rationalised, relocate swings to another playground.
			Double swings	Forpark	2004	17	2024						
Glass Court	Glass Court	Council	Steel combo – small	Miracle	1993	6	2013	Local	Junior	Bark chips	-	L	Swing location does not conform

<i>Name of Playground</i>	<i>Address</i>	<i>Land Ownership</i>	<i>Type of Equipment</i>	<i>Manufacturer</i>	<i>Date of Purchase</i>	<i>Remaining Lifespan</i>	<i>Year to be Replaced</i>	<i>Classification</i>	<i>Age Group Jr (3-7) or Sn (7-12)</i>	<i>Type of Softfall</i>	<i>Other Infrastructure</i>	<i>Usage Levels (High, Medium, Low)</i>	<i>Comments</i>
			Junior swing	Not known	1976	0	2007						for fall zones. Evaluate playground for potential rationalisation or reduction in equipment levels. If rationalised, relocate steel combo unit and Rocky Rodeo to another playground.
			Rocky Rodeo	Miracle	1993	6	2013						
Jaycee Park	Fenaughty Street	Council	Slide	Not known	1987	0	2007	Local	Junior and senior	Bark chips	Seat, picnic tables	M	Swings have been removed and will be replaced with double swings this year with a senior and junior swing seat. Wooden climbing
			Carousel	Not known	1987	0	2007						
			Wooden climbing frame	Not known	1987	0	2007						

Name of Playground	Address	Land Ownership	Type of Equipment	Manufacturer	Date of Purchase	Remaining Lifespan	Year to be Replaced	Classification	Age Group Jr (3-7) or Sn (7-12)	Type of Softfall	Other Infrastructure	Usage Levels (High, Medium, Low)	Comments
													frame needs removal. Evaluate need to keep slide and carousel. Popular playground, but needs work.
John Pilley Reserve	Fauna Park, Lake Road	Crown	Steel combo unit	Miracle	1992	5	2012	District	Junior and senior	Bark chips . Disabled swing has rubber under surface	Shelter, BBQ, Picnic tables, drinking fountain	H	Requires timber edging and further fencing works on remaining two sides. Has disabled swing – this needs to be more widely advertised.
			Senior swing	Miracle	1994	7	2014						
			Disabled swing	Not known	2004	17	2024						
			Self whirl	Forpark	2005	18	2025						
			Steel combo unit	Forpark	2005	18	2025						
McCormick Reserve		Council	Rocky Rodeo	Miracle	1992	5	2012	Local	Junior and senior	Bark chips	Seats	L	Low usage park. Routine maintenance
			Steel combo unit	Miracle	1992	5	2012						

<i>Name of Playground</i>	<i>Address</i>	<i>Land Ownership</i>	<i>Type of Equipment</i>	<i>Manufacturer</i>	<i>Date of Purchase</i>	<i>Remaining Lifespan</i>	<i>Year to be Replaced</i>	<i>Classification</i>	<i>Age Group Jr (3-7) or Sn (7-12)</i>	<i>Type of Softfall</i>	<i>Other Infrastructure</i>	<i>Usage Levels (High, Medium, Low)</i>	<i>Comments</i>
			Double swing	Not known	1977	0	2007						required. Double swings still adequate for a few years due to low usage levels.
Prunus Court	Prunus Court	Council	Steel combo unit	Miracle	1992	5	2012	Local	Junior and senior	Bark chips	Seat	L	Playground subject to high levels of vandalism. Requires timber edging. Swings still adequate for several years due to low usage.
			2 Rocky Rodeos	Miracle	1992	5	2012						
			Double swing	Not known	1977	0	2007						
			Steel combo	Forpark	2006	19	2026						
Poplar Street	Poplar Street	Council	Steel combo unit	Miracle	1981	0	2007	Local	senior	Bark chips	seats	L	Overall condition of combo unit is very poor. Schedule for replacement or rationalisation
			Double swings	Miracle	1994	7	2014						
			Junior whirl	Miracle	1981	0	2007						
			Steel slide	Not known	1976	0	2007						
			Junior swing	Not known	1976	0	2007						

<i>Name of Playground</i>	<i>Address</i>	<i>Land Ownership</i>	<i>Type of Equipment</i>	<i>Manufacturer</i>	<i>Date of Purchase</i>	<i>Remaining Lifespan</i>	<i>Year to be Replaced</i>	<i>Classification</i>	<i>Age Group Jr (3-7) or Sn (7-12)</i>	<i>Type of Softfall</i>	<i>Other Infrastructure</i>	<i>Usage Levels (High, Medium, Low)</i>	<i>Comments</i>
			Log climber	Not known	1976	0	2007						
<b>Ky Valley</b>													
Community Park	Scobie Road	Council	Steel combo unit	Ausplay	1999	12	2019	Local	Junior and senior	Bark chips	Shade sail, seats, BBQ	L	Located near tennis court and pool on old school grounds. Equipment okay. Committee of Management needs to be contacted re leaving chemical storage shed open to general public. General maintenance work required.
			Double swings	Ausplay	1999	12	2019						
<b>Lockington</b>													
Lions Apex Park	Cnr Pannoo Rd and Kotta		Double swings	Forpark	2003	16	2023	Local	Junior and	Bark chips	Vintage tractor and	L	High community



<i>Name of Playground</i>	<i>Address</i>	<i>Land Ownership</i>	<i>Type of Equipment</i>	<i>Manufacturer</i>	<i>Date of Purchase</i>	<i>Remaining Lifespan</i>	<i>Year to be Replaced</i>	<i>Classification</i>	<i>Age Group Jr (3-7) or Sn (7-12)</i>	<i>Type of Softfall</i>	<i>Other Infrastructure</i>	<i>Usage Levels (High, Medium, Low)</i>	<i>Comments</i>
	Road		Steel combo unit	Forpark	2003	16	2023		senior		wagon, shelter with public art, BBQ, picnic tables, public toilets		involvement in park. Community is building a shade structure over the playground. This should become the fenced playground in Lockington but due to placement away from the road, this is not as urgent as other playgrounds.
Clare St	Clare St / Lucas Court	Council	Double swing	Miracle	1998	11	2018	Local	Junior	Bark chips	Seat	L	Unfenced. Given that Council already maintains two playgrounds in
			2 spring riders	Miracle	1998	11	2018						

<i>Name of Playground</i>	<i>Address</i>	<i>Land Ownership</i>	<i>Type of Equipment</i>	<i>Manufacturer</i>	<i>Date of Purchase</i>	<i>Remaining Lifespan</i>	<i>Year to be Replaced</i>	<i>Classification</i>	<i>Age Group Jr (3-7) or Sn (7-12)</i>	<i>Type of Softfall</i>	<i>Other Infrastructure</i>	<i>Usage Levels (High, Medium, Low)</i>	<i>Comments</i>
													Lockington, this playground should be reviewed to determine whether or not rationalisation is required or management by a committee once the existing playground has reached the end of its lifespan.
Recreation Reserve		Council	Steel combo unit	Allplay	2001	14	2021	Local	Junior and senior	Bark chips	Seats, fencing	L	Installation of shade structure is inappropriate as it compromises fall zones – this is currently being

<i>Name of Playground</i>	<i>Address</i>	<i>Land Ownership</i>	<i>Type of Equipment</i>	<i>Manufacturer</i>	<i>Date of Purchase</i>	<i>Remaining Lifespan</i>	<i>Year to be Replaced</i>	<i>Classification</i>	<i>Age Group Jr (3-7) or Sn (7-12)</i>	<i>Type of Softfall</i>	<i>Other Infrastructure</i>	<i>Usage Levels (High, Medium, Low)</i>	<i>Comments</i>
													addressed. Fenced. Lack of space to install a swing. Need for more junior equipment at this site
<b>Rochester</b>													
Apex Park	Queen Street	Council	Tornado slide	Miracle	1987	0	2007	Local	Junior and senior	Bark chips	Seats	L	Monkey bar and steel slide programmed for removal. No irrigation. \$15,000 set aside in this year's budget to improve playground – needs to include a swing.
			Bounce-a-bout	Miracle	1987	0	2007						
			Steel slide	Unknown	1982	0	2007						
			Rocky Rodeo	Miracle	1992	5	2012						
			Rebound wall	Not known	1981	0	2007						
			Monkey bars	Not known	1981	0	2007						
			Sand pit	Not known	1981	0	2007						
Hood Street	Hood Street	Council	Steel combo unit	Allplay	2000	13	2020	Local	Junior and	Bark chips	Seat	L	Bush setting. Site should

Name of Playground	Address	Land Ownership	Type of Equipment	Manufacturer	Date of Purchase	Remaining Lifespan	Year to be Replaced	Classification	Age Group Jr (3-7) or Sn (7-12)	Type of Softfall	Other Infrastructure	Usage Levels (High, Medium, Low)	Comments
			Double swings	Forpark	2003	16	2023		senior				be developed to incorporate grass and water. Equipment could potentially be relocated to Recreation Reserve
			Self whirl	Forpark	2005	18	2025						
			Twin rider	Forpark	2005	18	2025						
Lions Park	Mary St / Northern Highway	Road Reserve	Combo unit with slides	Not known	2003	16	2023	District with Rotary Park	Junior and senior	Bark chips	Vintage tractor, public toilets, picnic tables, BBQ, fence around play equipment	M	Highest profile park in town. No major works required. Park to focus on equipment for senior children
			Double swings	Forpark	2005	18	2025						
Rankin Street	Rankin Street	Council	Steel combo unit	Ausplay	1993	6	2013	Local	Junior and senior	Bark chips		L	Combo unit is beyond repair due to lots of vandalism. Recommend assessment
			Double swings	Forpark	2005	18	2025						

<i>Name of Playground</i>	<i>Address</i>	<i>Land Ownership</i>	<i>Type of Equipment</i>	<i>Manufacturer</i>	<i>Date of Purchase</i>	<i>Remaining Lifespan</i>	<i>Year to be Replaced</i>	<i>Classification</i>	<i>Age Group Jr (3-7) or Sn (7-12)</i>	<i>Type of Softfall</i>	<i>Other Infrastructure</i>	<i>Usage Levels (High, Medium, Low)</i>	<i>Comments</i>
													of park. Funding is available in 2006/07 to remove combo unit in 2006/07 and replace with junior combo unit. Retain swings.
Rotary	Cnr. Gillies and Moore Streets	Council	Steel combo unit	Ausplay	1993	6	2013	District with Lions Park	Junior and senior	Bark chips	Public toilets, picnic tables	M	Good. Caters well for users of the facility. Park should focus on equipment for juniors.
			Double swings	Forpark	2006	19	2026						
<b>Rushworth</b>													
Geyles Reserve	Geyle Street	Crown	Slide	Miracle – most likely	Not known	0	2011	Local	Junior	Bark chips	Picnic table, vintage tractor	L-M	This playground will be decommissioned and replaced with
			Spring rockers	Miracle – most likely	Not known	0	2011						

Name of Playground	Address	Land Ownership	Type of Equipment	Manufacturer	Date of Purchase	Remaining Lifespan	Year to be Replaced	Classification	Age Group Jr (3-7) or Sn (7-12)	Type of Softfall	Other Infrastructure	Usage Levels (High, Medium, Low)	Comments
			Double swings	Miracle – most likely	Not known	0	2011						a new playground at the Recreation Reserve.
Lions Park	Station Street	Crown	Combo unit with slide, see-saw, double swings	Megatoy	2000	13	2020	District	Junior	Rubber matting	Picnic table, toilets, shelter, BBQ, shade sail, vintage cart	M	Slide needs to be replaced. Rubber matting recently installed. Fencing required.
			Slide	Unknown	1977	0	2007						
			Spring rocker	Miracle	1988	1	2008						
<b>Stanhope</b>													
Lions Park		Unknown	Trail blazer slide	Miracle	1995	8	2015	Local	Junior and senior	Bark chips	Picnic seats	M	Major playground in the town. Old equipment needs replacing. Climbing dome should be evaluated for removal.
			Double swing	Not known	1976	0	2007						
			2 spring rockers,	Miracle	1993	6	2013						
			Geodesic climbing frame	Miracle	1981	0	2007						
			Track ride	Forpark	2005	18	2025						
			Fun house	Forpark	2005	18	2025						

<i>Name of Playground</i>	<i>Address</i>	<i>Land Ownership</i>	<i>Type of Equipment</i>	<i>Manufacturer</i>	<i>Date of Purchase</i>	<i>Remaining Lifespan</i>	<i>Year to be Replaced</i>	<i>Classification</i>	<i>Age Group Jr (3-7) or Sn (7-12)</i>	<i>Type of Softfall</i>	<i>Other Infrastructure</i>	<i>Usage Levels (High, Medium, Low)</i>	<i>Comments</i>
			Steel combo unit – junior	Forpark	2006	19	2026						
<b>Tongala</b>													
Lions Park		Council	Trailblazer slide	Miracle	1985	0	2007	Local	Junior and senior	Bark chips	Shelter, picnic seats	M	Major playground for town. Used by sporting club families. Fenced off area. Replace swing set with a junior and a senior seat. Older equipment could last several more years. Remove wave slide and digger and undertake some landscaping. A
			Wave slide	Miracle	1985	0	2007						
			Steel combo	Miracle	1985	0	2007						
			Junior swirl	Not known	1980	0	2007						
			Double swing	Not known	1980	0	2007						
			Digger	Miracle	1985	0	2007						
			Self whirl	Forpark	2005	18	2025						
			Twin rider	Forpark	2005	18	2025						
			Track ride	Forpark	2005	18	2025						

<i>Name of Playground</i>	<i>Address</i>	<i>Land Ownership</i>	<i>Type of Equipment</i>	<i>Manufacturer</i>	<i>Date of Purchase</i>	<i>Remaining Lifespan</i>	<i>Year to be Replaced</i>	<i>Classification</i>	<i>Age Group Jr (3-7) or Sn (7-12)</i>	<i>Type of Softfall</i>	<i>Other Infrastructure</i>	<i>Usage Levels (High, Medium, Low)</i>	<i>Comments</i>
													replacement piece of equipment to be installed in the softfall area. Centralise equipment to reduce amount of softfall areas required.
Potts Village Green	Mangan Street	Council	Steel combo	Forpark	2000	13	2020	Local	Junior and senior	Bark chips	Seats	L-M	In middle of town but doesn't receive same level of use as Lions Park. Reasonably new park. No major issues. Consider installing an additional seat in 2011.
			Double swing	Forpark	2000	13	2020						



## 18.0 Other Public Playgrounds on Crown Land in the Municipality

The following playgrounds are located on Crown Land in the Shire of Campaspe. These playgrounds have been inspected annually by Council's external playground inspector. However, as these playgrounds are not Council's responsibility, no recommendations have been made in relation to their management or maintenance.

Name of Playground	Address	Land Ownership	Type of Equipment	Manufacturer	Date of Purchase	Remaining Lifespan	Year to be Replaced	Classification	Age Group Jr (3-7) or Sn (7-12)	Type of Softfall	Other Infrastructure	Usage Levels (High, Medium, Low)	Comments
<b>Bamawm</b>													
Bamawm Recreation Reserve	Bamawm Hall Road	Community	2 x tyre swings					Local	Junior	None			Not a Council responsibility
			1 slide										
<b>Colbinabbin</b>													
Colbinabbin Recreation Reserve		Council	Steel combo unit	Playspace	1999	12	2019	Local	Junior	Bark Chips			Potential for Council to do audit and hand works over to community to perform
<b>Echuca</b>													
Caravan Park		Crown	Track ride	Ausplay	1992	5	2012	Local					Leasee responsibility for
			Steel combo	Not known	1990	3	2010						

Name of Playground	Address	Land Ownership	Type of Equipment	Manufacturer	Date of Purchase	Remaining Lifespan	Year to be Replaced	Classification	Age Group Jr (3-7) or Sn (7-12)	Type of Softfall	Other Infrastructure	Usage Levels (High, Medium, Low)	Comments
			Double swing	Not known	1974	0	2007						playground audit and maintenance. No public access to this playground
			Rocky Rodeo	Miracle	1990	3	2010						
			Twin Rider	Miracle	1990	3	2010						
<b>Lancaster</b>													
Lancaster Recreation Reserve	Byrneside Rd	Crown	Combo unit with slide and flying fox, swings, bouncer					District	Junior and senior	Bark chips			DSE Local community.
<b>Rochester</b>													
Racecourse Recreation Reserve		DSE	Wooden fort with slide					Local	Junior	None			
<b>Stanhope</b>													
Stanhope Recreation Reserve		Crown	Metal climbing frame					Local	Senior	None			
<b>Toolleen</b>													
Toolleen Recreation Reserve	Trantor Rd	Crown	Combo unit with slide					Local	Senior	Bark chips	Picnic tables		
<b>Tennyson</b>													
Tennyson Recreation	Prairie – Rochester Rd	Crown	Wooden combo unit					Local	Senior	Bark chips			

<b>Comments</b>			
<b>Usage Levels (High, Medium, Low)</b>			
<b>Other Infrastructure</b>			
<b>Type of Softfall</b>		None	
<b>Age Group Jr (3-7) or Sn (7-12)</b>		Senior	
<b>Classification</b>		Local	
<b>Year to be Replaced</b>			
<b>Remaining Lifespan</b>			
<b>Date of Purchase</b>			
<b>Manufacturer</b>			
<b>Type of Equipment</b>		Small combo unit with slide	
<b>Land Ownership</b>		Crown	
<b>Address</b>		Murray Valley Hwy	
<b>Name of Playground</b>	Reserve	Welton	Welton Recreation Reserve

## 19.0 Playground Equipment Replacement Program 2007-2016

Year	Town	Playground	Item	Comments	Estimated Cost (2007 figures)
<b>2007/08</b>					
	Echuca	Apex Park	Infant equipment	Replace infant equipment with a steel combo unit and shade	\$15,000
	Rochester	Rankin Street	Steel combo unit	Replace with a slide	\$3,000
	Gunbower	Apex Park	Double swing	Replace double swing, climbing frame and slide with a swing and combo unit	\$15,000
			Spider climber		
			Twin rider		
			Steel slide		
	Stanhope	Lions Park	Double swing	Remove swings and replace with new swings and a spring rocker	\$5,000
			Geodesic climbing frame		
	Kyabram	Edis Park	Combo unit	Existing unit not compliant and needs to be replaced	\$8,000
<b>SUB-TOTAL</b>					<b>\$46,000</b>
<b>2008/09</b>					
	Kyabram	Jaycee Park	Slide	Replace with a junior combo unit and some senior equipment	\$10,000
			Carousel		
			Wooden climbing frame		
	Echuca	Garden Crescent	Double swing	Replace swing and add a free standing slide	\$7,000
		Apex Park	Junior equipment	Replace combo unit and tyre swings plus rubber surface	\$50,000
			Monkey bars		
	Rushworth	Lions Park	Spring rocker	Replace spring rocker and slide plus rubber surface	\$14,500
			Slide		
<b>SUB-TOTAL</b>					<b>\$81,500</b>
<b>2009/10</b>					
	Echuca	Wilson Court	Double swing	Replace double swing and place in new sofffall area	\$4,500

Year	Town	Playground	Item	Comments	Estimated Cost (2007 figures)
	Kyabram	McCormick Reserve	Double swings	Replace double swings	\$3,000
	Kyabram	Poplar Street	Steel combo	Replace with new combo unit	\$10,000
			Junior whirl		
			Steel slide		
			Junior swing		
			Log climber		
	Tongala	Lions Park	Trail blazer slide	Remove 2 smaller swings and replace double swing. Install a new steel combo	\$15,000
			Wave slide		
			Steel combo		
			Junior swirl		
			Digger		
<b>SUB-TOTAL</b>					<b>\$32,500</b>
<b>2010/11</b>					
	Echuca	Hopwood Gardens	Steel combo unit	Replace existing combo unit with a new combo unit and rubber surface	\$60,000
		Towle Court	Double swing	Replace double swing	\$4,500
			Spring rocker		
	Girgarre	Winter Road	Swing – senior	Replace with one double swing with a senior and junior seat , a slide and two spring rockers	\$10,000
			Swing – junior		
			Climbing frame		
			2 junior slides		
			Senior slide		
			Monkey bar		
<b>SUB-TOTAL</b>					<b>\$74,500</b>
<b>2011/12</b>					
	Colbinabbin	Colbinabbin Memorial Hall	Steel combo unit	Replace combo unit and install 2 spring rockers	\$13,000

Year	Town	Playground	Item	Comments	Estimated Cost (2007 figures)
	Echuca	Echuca South Netball Complex	Steel combo unit	Replace steel combo unit	\$8,000
		Murrumbidgee Drive	Grand carousel	Replace with some junior equipment	\$5,000
			Scale swing		
<b>SUB-TOTAL</b>					<b>\$26,000</b>
2012/13					
	Kyabram	McCormick Reserve	Rocky Rodeo	Replace steel combo unit and Rocky Rodeo	\$13,000
			Steel combo unit		
<b>SUB-TOTAL</b>					<b>\$13,000</b>
2013/14					
	Rochester	Rotary Park	Steel combo unit	Replace steel combo unit with rubber surface	\$22,000
<b>SUB-TOTAL</b>					<b>\$22,000</b>
2014/15					
	Kyabram	John Pilley Reserve	Steel combo unit	Replace steel combo unit and senior swing with rubber surface	\$50,000
			Senior swing		
		Poplar Street	Double swings	Replace swings	\$3,000
<b>SUB-TOTAL</b>					<b>\$53,000</b>
2015/16					
	Stanhope	Lions Park	Trail blazer slide	Replace slide and 2 spring rockers	\$6,000
			2 spring rockers		
<b>SUB-TOTAL</b>					<b>\$6,000</b>
2016/17					
	Kyabram	Edis Park	Rock 'n'Ride	Replace with new equipment	\$10,000
			Spring rider		
			Triple rider		
<b>SUB-TOTAL</b>					<b>\$10,000</b>
<b>TOTAL</b>					<b>\$364,500</b>

## 20.0 Recommendations

The highest priority is to ensure that playgrounds that do not meet current Australian Standards for equipment or soffit or dealt with first. The next priority is to ensure that equipment at the end of its lifespan is replaced, as per the Equipment Replacement Program detailed in the Playground Inventory and that other playgrounds are developed or rationalised as deemed appropriate. A number of other recommendations have been developed regarding management and maintenance of playgrounds. The following table provides a summary of all recommendations, noting that estimates are based on 2007 figures, but need to increase in line with CPI. A table is provided in the appendix of the report to calculate the actual cost per annum, including CPI increases of 1.3% per annum.

Issue	Recommendation	07/08	08/09	09/10	10/11	11/12	12/13	13/14	14/15	15/16	16/17
Playground Principles	To adopt the playground principles listed within this report	\$0									
Playground Enhancements	To install new playground equipment and infrastructure at Bowen Street, Echuca		\$10,000								
	To install new playground equipment and infrastructure at Echuca West	\$20,000									
	To install a new playground and infrastructure at Victoria Park, Echuca			\$15,000							
	To install a new playground and infrastructure at					\$15,000					

Issue	Recommendation	07/08	08/09	09/10	10/11	11/12	12/13	13/14	14/15	15/16	16/17
	Alton Reserve, Echuca										
	To install a new playground and infrastructure at Banyule Reserve, Echuca						\$15,000				
	To install a new playground and infrastructure at Campaspe River Reserve, Echuca									\$15,000	
	To install new playground equipment and infrastructure at Drum Street, Kyabram			\$15,000							
	To install playground equipment and infrastructure at Northern Oval, Kyabram						\$30,000				
	To install a swing for people with disabilities at Apex Park, Echuca, including rubber surfacing			\$26,000							
	To install a new playground at Rushworth Recreation Reserve to replace the playground being removed at					\$15,000					



Issue	Recommendation	07/08	08/09	09/10	10/11	11/12	12/13	13/14	14/15	15/16	16/17
	Geyles Reserve										
	To monitor new residential development areas to ensure that adequate playgrounds are planned and provided for the community	Ongoing									
	To enter discussions with schools about community access to playgrounds, particularly in areas where the ratio of playground provision is low or in towns where there are school playgrounds but no Council owned playgrounds	Ongoing									
	To ensure that new playgrounds are linked to shared paths wherever possible	Ongoing									
Equipment Replacement	To ensure that once equipment has reached the end of its useful lifespan that it is replaced as per the equipment replacement	\$46,000	\$81,500	\$32,500	\$74,500	\$26,000	\$13,000	\$12,000	\$53,000	\$6,000	\$10,000

Issue	Recommendation	07/08	08/09	09/10	10/11	11/12	12/13	13/14	14/15	15/16	16/17
	program contained within this report										
	To replace equipment that does not meet safety standards or needs maintenance	\$13,463	\$45,000	\$45,000	\$45,000	\$45,000	\$45,000	\$45,000	\$45,000	\$45,000	\$45,000
Equipment Removals to meet safety standards	Remove steel combo from Edis Park, Kyabram	\$1,000									
	Remove Bolt-o-log from Frederick Street Playground, Kyabram	\$1,000									
Shade	To ensure that shade sails or trees are available at each playground in the municipality to provide protection from the sun	Ongoing									
	To install shade sails at Stanhope (Lions Park)	\$7,000									
	To install shade sails at Hopwood Park, Echuca		\$25,000								
	To install shade sails at Tongala Lions Park			\$7,000							
	To install shade sails at Colbinabbin					\$7,000					
	To install shade sails at Rochester Rotary Park							\$15,000			

Issue	Recommendation	07/08	08/09	09/10	10/11	11/12	12/13	13/14	14/15	15/16	16/17
	To install shade sails at John Pilley Playground, Kyabram							\$25,000			
	To install shade sails at Lions Park Rushworth										\$10,000
Rubber matting	To install rubber matting at Apex Park under infant equipment	\$20,000									
Fences	To develop a minimum of one fenced playground in each town	Ongoing and as per following schedule									
	To install a fence at Gunbower Playground	\$6,000									
	To install a fence at John Pilley (Kyabram Fauna Park) Playground	\$10,000									
	To install a fence at Lockington Apex Lions Park	\$8,000									
	To install a fence at Echuca West Playground	\$12,000									
	To install a fence at Stanhope			\$10,000							
	To install a fence at Girgarre				\$8,000						
	To install a fence at Colbinabbin					\$5,000					
	To install a fence at Rushworth Lions Park										\$8,000

Issue	Recommendation	07/08	08/09	09/10	10/11	11/12	12/13	13/14	14/15	15/16	16/17
Trees	To undertake an annual inspection of trees by a qualified arborist at each playground	Ongoing – internal cost to Council									
Bins	To install litter bins at playgrounds and parks	\$10,000									
Seats	To upgrade seats at playgrounds and parks					\$5,000		\$5,000			
Inspections	To continue to conduct weekly, quarterly and annual playground inspections	Ongoing									
	To liaise with Civic Mutual Plus to ensure that inspection regimes are adequate for insurance purposes	Ongoing									
	To review reporting mechanisms on an annual basis to ensure that all requirements are met	Ongoing									
	To purchase a digital camera and a laptop for the playground inspection crew to improve efficiencies related to incidents, repairs and inventory			\$3,000							

Issue	Recommendation	07/08	08/09	09/10	10/11	11/12	12/13	13/14	14/15	15/16	16/17
	maintenance										
	To ensure that all playground maintenance crew staff are qualified to conduct playground assessments and receive ongoing training as appropriate	Ongoing – impact on training budget									
	To conduct quarterly and annual inspections of each of the five pre-schools / childcare centres owned and managed by Council on a fee for service basis	Ongoing – cost will be recouped as a fee for service									
Inventory	To maintain an up to date inventory of all playgrounds within the municipality	Ongoing									
	To develop an electronic inventory linked to asset management systems and GIS which is accessible to the playground maintenance crew in the field	Internal cost to Council									
Australian Playground Standards and	To ensure that Council obtains and regularly receives	\$800 estimated cost to									

Issue	Recommendation	07/08	08/09	09/10	10/11	11/12	12/13	13/14	14/15	15/16	16/17
Membership of Playground Associations	updates for all relevant Australian Playground Standards	purchase Standards. Ongoing cost to receive updates									
	To ensure that all playgrounds are installed and maintained as per Australian Standards	Ongoing									
	To ensure that all playground equipment meets Australian standards	Ongoing									
Installation	To ensure that the manufacturer conducts a post installation inspection of all new items of playground equipment and provides documentation stating that the equipment meets Australian Standards and was installed correctly	Ongoing									
	To inform the community that any equipment or infrastructure at local playgrounds	Ongoing									

Issue	Recommendation	07/08	08/09	09/10	10/11	11/12	12/13	13/14	14/15	15/16	16/17
	must be approved by and installed by Council and / or a suitable contractor										
Promotion of playgrounds	To promote the location of playgrounds in the municipality on Council's website, in new residents kits and in various tourism publications	Ongoing									
	To promote the location of playgrounds that cater for people with disabilities	Ongoing									
Rationalisation	To ensure that playgrounds no longer required in the community are decommissioned and that the land remains as public open space	Ongoing									
	To review the use of Prunus St, Crow Crt, Frederick St and Glass Court Playgrounds in Kyabram with the view to potentially rationalise these playgrounds at the end of their lifespan – noting that a new	Internal cost to Council									

Issue	Recommendation	07/08	08/09	09/10	10/11	11/12	12/13	13/14	14/15	15/16	16/17
	playground at Northern Oval would be developed and that the community may be given the option of maintaining and managing playgrounds on these sites										
	To consider handing over the management of Clare Court Playground in Lockington to a community based committee of management when the current equipment reaches the end of its lifespan (2017/18) should the community wish to retain this playground										No cost
	To remove equipment from Geyle Street Playground in Rushworth when it reaches the end of its lifespan (as a new replacement playground will be established at the Recreation					\$1,000					



Issue	Recommendation	07/08	08/09	09/10	10/11	11/12	12/13	13/14	14/15	15/16	16/17
	Reserve). This area to remain public open space.										
	To ensure that if playgrounds are decommissioned, local residents are informed in advance and provided with information about alternative play options and the opportunity to take over management of the playgrounds themselves	Ongoing									
<b>TOTAL \$</b>	<b>1,158,763</b>	<b>155,263</b>	<b>161,500</b>	<b>153,500</b>	<b>127,500</b>	<b>119,000</b>	<b>103,000</b>	<b>102,000</b>	<b>98,000</b>	<b>66,000</b>	<b>73,000</b>

Council's existing Capital Works budget proposes expenditure of \$726,723 over the next five years on playgrounds, or an average of \$145,345 per annum (this includes an amount for unprogrammed works). The budget recommended within this playground strategy recommends expenditure of \$716,763 over the next five years (\$1,158,763 over the next ten years) or an average of \$143,353 per annum in the first five years or an average of \$115,876 spread over ten years, based on today's prices. Hence over a ten year period of time, the playground budget is likely to be very similar to the amount currently proposed by Council, however, Council's expenditure is likely to be far more strategic and result in the equitable provision of quality, safe play experiences for the entire Campaspe community and its visitors.

## 21.0 Appendix

### 21.1 Costings with CPI Included

The following table shows the actual cost per annum, incorporating a CPI increase of 1.3% per annum, based on 2007 prices.

Recommendation	2007/08	2008/09 +1.30%	2009/10 +2.60%	2010/11 +3.90%	2011/12 +5.20%	2012/13 +6.50%	2013/14 +7.80%	2014/15 +9.10%	2015/16 +10.40%	2016/17 +11.70%
To install new playground equipment and infrastructure at Bowen Street, Echuca		\$10,130								
To install new playground equipment and infrastructure at Echuca West	\$20,000									
To install a new playground and infrastructure at Victoria Park, Echuca			\$15,390							
To install a new playground and infrastructure at Alton Reserve, Echuca					\$15,780					
To install a new playground and infrastructure at Banyule Reserve, Echuca						\$15,975				

<b>Recommendation</b>	<b>2007/08</b>	<b>2008/09 +1.30%</b>	<b>2009/10 +2.60%</b>	<b>2010/11 +3.90%</b>	<b>2011/12 +5.20%</b>	<b>2012/13 +6.50%</b>	<b>2013/14 +7.80%</b>	<b>2014/15 +9.10%</b>	<b>2015/16 +10.40%</b>	<b>2016/17 +11.70%</b>
To install a new playground and infrastructure at Campaspe River Reserve, Echuca									\$16,560	
To install new playground equipment and infrastructure at Drum Street, Kyabram			\$15,390							
To install playground equipment and infrastructure at Northern Oval, Kyabram						\$31,950				
To install a swing for people with disabilities at Apex Park, including rubber surfacing			\$26,676							
To install a new playground at Rushworth Recreation Reserve to replace the playground being removed at Geyles Reserve					\$15,780					

<b>Recommendation</b>	<b>2007/08</b>	<b>2008/09 +1.30%</b>	<b>2009/10 +2.60%</b>	<b>2010/11 +3.90%</b>	<b>2011/12 +5.20%</b>	<b>2012/13 +6.50%</b>	<b>2013/14 +7.80%</b>	<b>2014/15 +9.10%</b>	<b>2015/16 +10.40%</b>	<b>2016/17 +11.70%</b>
To ensure that once equipment has reached the end of its useful lifespan that it is replaced as per the equipment replacement program contained within this report	\$46,000	\$82,560	\$33,345	\$77,406	\$27,352	\$13,845	\$12,936	\$57,823	\$6,624	\$11,170
To replace equipment that does not meet safety standards or needs maintenance	\$13,463	\$45,585	\$46,170	\$46,755	\$47,340	\$47,925	\$48,510	\$49,095	\$49,680	\$50,265
Remove steel combo from Edis Park, Kyabram	\$1,000									
Remove Bolt-o-log from Frederick Street Playground, Kyabram	\$1,000									
To install shade sails at Stanhope (Lions Park)	\$7,000									
To install shade sails at Hopwood Park, Echuca		\$25,325								

<b>Recommendation</b>	<b>2007/08</b>	<b>2008/09 +1.30%</b>	<b>2009/10 +2.60%</b>	<b>2010/11 +3.90%</b>	<b>2011/12 +5.20%</b>	<b>2012/13 +6.50%</b>	<b>2013/14 +7.80%</b>	<b>2014/15 +9.10%</b>	<b>2015/16 +10.40%</b>	<b>2016/17 +11.70%</b>
To install shade sails at Tongala Lions Park			\$7,182							
To install shade sails at Colbinabbin					\$7,364					
To install shade sails at Rochester Rotary Park							\$16,170			
To install shade sails at John Pilley Playground, Kyabram							\$26,950			
To install shade sails at Lions Park Rushworth										\$11,170
To install rubber matting at Apex Park under junior equipment	\$20,000									
To install a fence at Gunbower Playground	\$6,000									
To install a fence at John Pilley (Kyabram Fauna Park) Playground	\$10,000									
To install a fence at Lockington Apex Lions Park	\$8,000									

<b>Recommendation</b>	<b>2007/08</b>	<b>2008/09 +1.30%</b>	<b>2009/10 +2.60%</b>	<b>2010/11 +3.90%</b>	<b>2011/12 +5.20%</b>	<b>2012/13 +6.50%</b>	<b>2013/14 +7.80%</b>	<b>2014/15 +9.10%</b>	<b>2015/16 +10.40%</b>	<b>2016/17 +11.70%</b>
To install a fence at Echuca West Playground	\$12,000									
To install a fence at Stanhope			\$10,260							
To install a fence at Girgarre				\$8,312						
To install a fence at Colbinabbin					\$5,260					
To install a fence at Rushworth Lions Park										\$8,936
To install litter bins at playgrounds and parks	\$10,000									
To upgrade seats at playgrounds					\$5,260		\$5,390			
To purchase a digital camera and a laptop for the playground inspection crew to improve efficiencies related to incidents, repairs and inventory			\$3,078							

<b>Recommendation</b>	<b>2007/08</b>	<b>2008/09 +1.30%</b>	<b>2009/10 +2.60%</b>	<b>2010/11 +3.90%</b>	<b>2011/12 +5.20%</b>	<b>2012/13 +6.50%</b>	<b>2013/14 +7.80%</b>	<b>2014/15 +9.10%</b>	<b>2015/16 +10.40%</b>	<b>2016/17 +11.70%</b>
To ensure that Council obtains and regularly receives updates for all relevant Australian Playground Standards	\$800									
To remove equipment from Geyle Street Playground in Rushworth when it reaches the end of its lifespan (as a new replacement playground will be established at the Recreation Reserve). This area to remain public open space.					\$1,052					
<b>\$1,213,937</b>	155,263	\$163,600	\$157,491	\$132,473	\$124,136	\$109,695	\$109,956	\$106,918	\$72,864	\$81,541