

From Council:

# Echuca Village and Kanyapella Recovery Update

## August - September 2023

For all enquiries and requests, contact Council on 1300 666 535.

### New Community Recovery Hub Opens

Council's new Recovery Hub for Campaspe Shire has opened at 48 Mackay Street in Rochester. The hub is staffed Monday to Friday from 8.30am-5.00pm by dedicated community recovery officers.

The hub is also home to a range of government and professional agencies, including Anglicare case management and financial counselling, Partners in Wellbeing small business financial counselling, Department of Families, Fairness and Housing, MIND Australia, Echuca Regional Health case management and Bendigo Community Health case management.

Funded by the Victorian Government through Emergency Recovery Victoria, the hub will be the primary location for people to access the services and support they need to recover from the flood. A mobile outreach unit will also enable the staff to visit people in the community through pop-up sessions, events and specialised programs. A range of forums and programs designed to equip residents with knowledge and skills on emergency preparedness and resilience will also run from the hub.

To contact the Recovery Hub, please call 1300 666 535 and press 2 or email [shire@campaspe.vic.gov.au](mailto:shire@campaspe.vic.gov.au).



Council's new Recovery Team working from Campaspe Shire's new Recovery Hub in Rochester.

### Flood Inquiry Public Hearings

The Legislative Council Environment and Planning Committee is holding public hearings for the Inquiry into the 2022 Flood Event in Victoria in the Shire of Campaspe as follows:

- Rochester – Wed, 23 August 2023
- Echuca – Thurs, 24 August 2023

More information about the public hearings, including venues, times and a list of witnesses will be published at <https://new.parliament.vic.gov.au/get-involved/inquiries/floodinquiry/hearings>.



SCAN ME FOR  
MORE INFO

### Municipal Recovery Committee

The new Municipal Recovery Committee held its first meeting on 17 July. The role of the committee is to coordinate flood recovery processes and support flood-impacted communities within Campaspe Shire. This will involve coordinating information, resources and services, establishing priorities and contributing to the development and implementation of a Municipal Recovery Plan. The committee will be a link between local, regional and state government departments and agencies, other community recovery committees, impacted communities and Council.

## Flood Advocacy Update

Council continues to strongly advocate on behalf of the Campaspe community to strengthen flood preparedness and mitigation measures across the shire, and for the supports and resources our community needs to recover.

As a result of Council's advocacy efforts, the Victorian Government committed to investigate the operating and infrastructure arrangements at Lake Eppalock to find opportunities to reduce the impact of flooding from overflow spillage. This investigation is currently underway and we look forward to hearing the findings in November 2023. For more information visit <https://water.vic.gov.au>.

Council is continuing to advocate for:

- funding to review and update the Rochester Flood

Plan with data from the October 2022 flood

- funding for a new aquatic facility in Rochester to replace the old outdoor pool destroyed in the flood
- funding to complete stages 2 and 3 of the Aquatic Reserve Open Spaces Project in Echuca
- funding for redevelopment of Victoria Park to create a new, multiuse community facility, including establishing an accessible, purpose-built emergency relief centre for use during emergencies

Council has also lodged a submission to the Australian Government's Independent Review into Commonwealth Disaster Funding, highlighting the need for 'betterment' funding to repair flood-damaged public assets to current standards to improve their capacity to withstand flood events into the future.

## Urgent Road Works

Emergency repair works have recently been completed at the following locations:

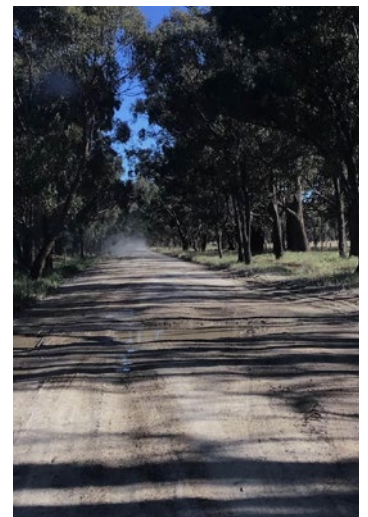
- Watson Road Kanyapella- Mitchell Road to Glanville Road West **(Pictured)**

Works are expected to be undertaken in the next few weeks at the following locations:

- Bangerang Road – Looker to Stewarts Bridge Road (temporary patching only)



Before



Before

## Farmer Health Support

The National Centre for Farmer Health is committed to supporting primary producers whose properties, livestock or crops were damaged or lost in the floods and storms through the delivery of initiatives to boost farmer mental health and wellbeing, including:

- a supportive online community through the #BuildingFarmSpirit social media campaign

- free access to online psychology support delivered by farmer health trained psychologists
- support for community events providing social connection and mental health promotion opportunities for farmers, farming families and farming communities
- distribution of mental health resources and support information.

More information is available at

<https://farmerhealth.org.au/buildingfarmspirit>.

## Echuca Regional Health Flood Recovery Program

ERH's Flood Recovery Program can be accessed through the Victorian Government hotline on 1800 560 760, by referral from other service providers, through local recovery centres, or by self-referral. The ERH Flood Recovery Support office operates Monday to Friday, from 8.30am-4.30pm. For information, call 5485 5421.

## Mental Health Support

For local mental health support Monday to Friday, from 9.00am-5.00pm, please call Echuca Regional Health (ERH) on 5485 5800. You can also contact your local GP or Headspace Echuca for those aged 12-25 years. Other support lines include Beyond Blue on 1300 224 636 or Lifeline on 131 114. For more information, scan the QR code.







## Homes at Home Program

The Victorian Government has expanded its Homes at Home program to Campaspe Shire. The program enables eligible residents whose properties were made uninhabitable by the October 2022 floods to continue living on their property while works are being carried out to repair their home. Under the program, caravans are made available for up to three years. Each caravan comes fitted out with amenities, such as a kitchen and television.

The program will prioritise residents who were uninsured for flood and are facing financial hardship. To be eligible, flood-affected residents must complete a free structural assessment through the state-coordinated Clean-up Program. Interested residents can visit [www.vic.gov.au/homesathome](http://www.vic.gov.au/homesathome) to read the full eligibility criteria and register their interest.

## Waste Services

### Free Aerated Caddies for Rochester Residents

Council is offering one free aerated food scrap caddy and one roll of compostable bags to any Rochester resident who uses a green bin service and lost their caddy in the floods. To register, please scan the QR code or call Customer Service on 1300 666 535. Council will be in contact shortly with more information.



### Household Flood-Affected Waste

All resource recovery centres (RRCs) located in Echuca, Kyabram (Mt Scobie), Rochester, Rushworth, Gunbower, Lockington, Colbinabbin, and Toolleen will continue to accept household flood waste (under three cubic metres), free of charge until 1 October 2023. This is at the discretion of the operator. Contact details of householders will need to be provided to the RRC at the time of drop off to use this free service.

For opening hours of each RRC, please visit: [www.campaspe.vic.gov.au/rrc](http://www.campaspe.vic.gov.au/rrc) or scan the QR code.



### Commercial Volumes of Flood Waste

Residents and commercial operators with over three cubic metres of flood waste can contact a local landfill for disposal options. The closest landfills are Moama Landfill (Murray River Council), Shepparton (Cosgrove) and Patho Landfill. Patho Landfill only accepts trucks that are equal to, or larger than, a light rigid while Moama and Shepparton (Cosgrove) landfills accept flood waste over three cubic metres and any truck size is accepted.

Greater Shepparton City Council currently requires that all flood waste to Cosgrove Landfill (Shepparton) is pre-registered with Campaspe Shire Council and then a disposal time pre-booked directly with Greater Shepparton City Council. To pre-register, scan the QR code, visit Council's website [www.campaspe.vic.gov.au](http://www.campaspe.vic.gov.au), or call Council on 1300 666 535.



### Building Waste

Residential quantities of building waste (less than three cubic metres) may be taken by residents to any of Council's resource recovery centres. For more information, visit Council's website [www.campaspe.vic.gov.au](http://www.campaspe.vic.gov.au).



### Recovery Hotline

For information on clean up services, temporary accommodation, and mental health and wellbeing support call 1800 560 760.



### Council Information

For the latest new news and information on flood recovery, including previous community recovery newsletters, visit [www.campaspe.vic.gov.au/flood](http://www.campaspe.vic.gov.au/flood).

# Building Fact Sheet

# Returning Home To Your Flood-Impacted Property



## Why Building Regulations and Building Permits Matter

The Victorian building permit requirements are designed to protect people's health, safety and amenity, and are a legal requirement to ensure that houses and other building structures impacted by floods are deemed habitable and fit-for-purpose prior to human occupation.

Whether your house was completely inundated with water above floor level or flooded underneath, it may have sustained material or structural damage. It may have also grown mould (particularly black mould) and mildew which can cause health problems for you and your family.

That's why it's important to ensure that any renovation or repairs required to your flood-impacted home meet relevant building codes and standards, and have the necessary building permits in place before moving back into it. Meeting these building requirements will also help you avoid any potential fine, having an insurance claim rejected or affecting the resale of your home in the future.

## Engaging Builders and Other Tradespeople

Regardless of whether a building permit is required, always engage registered and qualified builders and other tradespeople, and ask to view their Victorian Building Authority (VBA) registration number and insurances. Plumbing and electrical certificates are also required for all associated works and often needed for insurance purposes.

To find, and check the registration details of, building practitioners and plumbers visit [www.vba.vic.gov.au/tools/find-practitioner](http://www.vba.vic.gov.au/tools/find-practitioner).

## Do I Need a Permit?

You don't always need a building permit for works. However, you must make sure all construction, renovation or repair works, even those that don't require a permit, meet building regulations.

Instances where you will require a building permit:

- restumping, reblocking or underpinning your house
- structural repairs, such as replacement of timber subfloor framing (including single timber members), rotted floor or wall framing, verandahs and the like
- re-arrangement of internal and/or external walls
- re-arrangement of window and/or door openings
- re-construction of sheds greater than 10m<sup>2</sup> (2m x 5m and 3 x 3.5m, for example)
- re-construction or alterations to carports or garages
- repairing roofs from sheet roof to tiled roof and vice versa.

Some instances where you may not require a building permit:

- replacement of weatherboards
- roof repairs (non-structural) to tiled or sheet roofs
- replacement of plaster walls and carpets/flooring in parts of the house
- shower or bath repairs
- painting
- re-tiling works to kitchen, bathroom or laundry.

Scan the QR code more information on the requirements for, and exemptions from, obtaining a building permit.



SCAN TO GET YOU THERE

## Want More Information?

If you have any questions or want more information on permits or other building matters, please call Council's Building team on 1300 666 535, visit [www.campaspe.vic.gov.au/Plan-build/Building](http://www.campaspe.vic.gov.au/Plan-build/Building) or email [shire@campaspe.vic.gov.au](mailto:shire@campaspe.vic.gov.au).

More information and resources can also be found at:

- Victorian Building Authority: 1300 815 127 or [www.vba.vic.gov.au](http://www.vba.vic.gov.au)
- Victorian Government: [www.vic.gov.au/2022-flood-recovery](http://www.vic.gov.au/2022-flood-recovery)