

From Council:

Echuca Village & Kanyapella Recovery Update

30 March 2023



For all enquiries and requests, contact Council on 1300 666 535.

Welcome

Welcome to **Echuca Village & Kanyapella Recovery Update**. This regular bulletin will keep the Echuca Village and Kanyapella communities updated on the flood recovery process and progress of activities. It will include information from Council as well as news and information from the community, and government authorities and agencies supporting recovery.

Thank You!

Council would like to acknowledge and thank all those in the community who have helped to protect the communities of Echuca Village and Kanyapella, both during the crisis and since the waters have receded. Many people have gone above and beyond to assist their fellow community members while at the same time grappling with their own challenges. Like those living in other flood-impacted communities across Campaspe, you have demonstrated an incredible community spirit and for that, we say thank you.

2022-2023 Rates Relief Package

Great news for ratepayers! Council has now approved a rates relief package in 2022-2023 for properties impacted by the October 2022 flood event.

This package is the most equitable economic way Council can help ratepayers and is a key part of a broad range of resources and supports Council has put in place to help those impacted by the floods.

All ratepayers identified as flood-impacted will receive a letter and information sheet in the next few weeks explaining the rate relief package.

If you believe your property was flood-impacted and don't receive a letter from Council by the end of April, please contact Council on 1300 666 535 or via email shire@campaspe.vic.gov.au.

For more information please visit <https://www.campaspe.vic.gov.au/flood>.

AusIndustry – Strengthening Business Advisory Service

Flood-impacted businesses are encouraged to take advantage of AusIndustry's experienced and independent business advisors who will be in Echuca in early April.

The advisors will work with business owners to help them become stronger, more resilient and better prepared for the future. As part of the process, they'll complete a comprehensive business overview covering:

- impacts and issues affecting the business, such as:
 - property, plant, and equipment
 - stock/inventory
 - finance
 - employees
 - supply chain
 - marketing
- identification of systems and strategies for business improvement
- assessment of any gaps in business knowledge
- identification of connections to services and other support.

Following the initial discussion, the advisor will assist the business owner on next steps, which may include further business advice, referral to other services or follow-up information.

The business advisors will be available on 3 April between 9.30 - 3.00pm at the Campaspe Shire Council, 2 Heygarth Street, Echuca. To book an appointment please click on the QR code or visit www.business.gov.au/EP.



Music Events Program

The Victorian Government has announced it will contribute \$1 million to enable live music events to be held across flood-affected regions to ignite tourism and reunite communities. People in flood-affected communities, including residents, venues, event presenters and artists, are encouraged to contact Music Victoria at info@musicvictoria.com.au to put forward ideas and discuss being part of the program.



Urgent Road Works

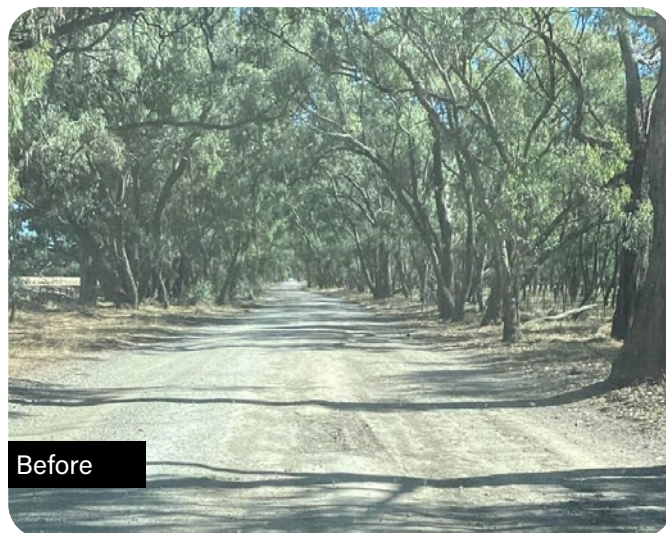
Council has established a panel of contractors to accelerate urgent repairs to flood-damaged roads. These emergency works, funded by the state and federal governments, are required to be completed by the end of April.

Recent emergency works have included repairs to:

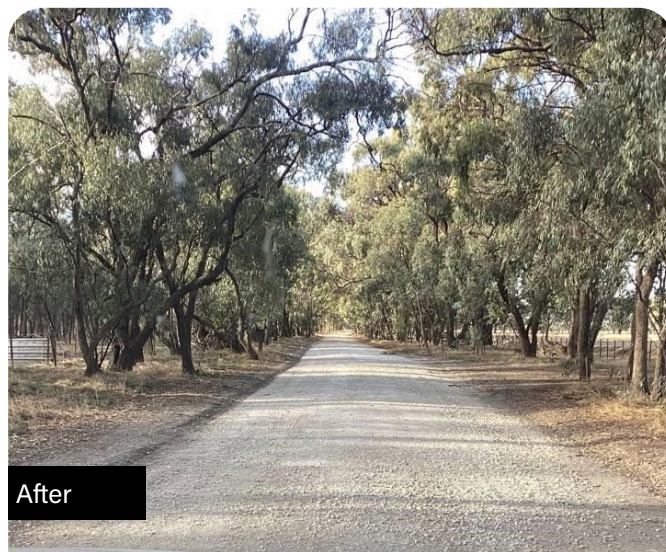
- Bangerang Road, Glanville Road, Mitchell Road, Looker Road, McDonald Road, Stewarts Bridge Road, among others.

Works expected to be undertaken in the next few weeks include:

- monitoring and additional repairs to Bangerang Road, and works to Lady Augusta Road, Tehan Road, Kelsh Road, among others
- debris removal from bridges such as Stewarts Bridge.



Before



After

McDonald Road

Help for Farmers

Agriculture Victoria

Information about support measures available for flood and storm-affected farmers can be found at www.agriculture.vic.gov.au/floods. To subscribe to the Ag Recovery newsletter click on 'Recovery resources and events.'

Farmers can contact the Agriculture Recovery team on 0427 694 185 (Mon-Fri between 8.30 am and 5 pm) or email recovery@agriculture.vic.gov.au.

AgBiz Assist

AgBiz Assist provides a broad range of outreach services and support programs for flood-impacted farmers. Please contact 1300 834 775 or visit www.agbizassist.org.au.

Rural Aid

Rural Aid provides farmers with a range of support, including confidential counselling, fodder, domestic water, financial assistance and access to volunteers through 'The Farm Army'. To access support, please register online at www.ruralaid.org.au or call 1300 327 624.

Rural Finance

The following grant applications are open until 4pm on Sunday, 30 April:

- **Primary Producer Recovery Grants:** Up to \$75,000 grants to cover the cost of recovery and get businesses up and running again. Note: This replaces the \$10,000 Primary Producer Flood Clean-Up, Relief Grants announced on 19 October. Producers that have received a Primary Producer Flood Clean-Up Relief Grant of \$10,000 can now apply for up to a further \$65,000 under the Primary Producer Recovery Grant, bringing the total to \$75,000.
- **Rural Landholder Grants:** Up to \$25,000 grants to cover the costs of disaster impacts for small-scale producers.
- **Primary Producer Concessional Loans:** Up to \$250,000 to restore or replace damaged equipment and infrastructure, or to cover the short-term business expenses.
- **Primary Producer Transport Subsidies:** Up to \$15,000 to support the transport of emergency fodder or stock drinking water, and the movement of livestock.

For more information or to apply for support, visit www.ruralfinance.com.au.

Rural Financial Counselling Service

The Rural Financial Counselling Service offers free and independent financial information, options, decision-making support and referral services to farmers and small, related rural businesses who are in, or at risk of, financial hardship. They can also assist farmers to apply for financial assistance. To connect with your local service call 1300 771 741 or visit <https://nema.gov.au/get-support>.

Murray Dairy Taking Stock Program

Flood-impacted farm businesses can receive one-on-one support from local, well-known consultants and industry professionals on the topics of budgeting, feed and farm business planning. For more information, contact Murray Dairy on 4811 6008.

National Centre for Farmer Health

The National Centre for Farmer Health supports primary producers whose properties, livestock or crops were damaged or lost in the floods and storms through the delivery of initiatives to boost farmer mental health and wellbeing, including:

- A supportive online community through the #BuildingFarmSpirit social media campaign
- Free access to online psychology support delivered by farmer health trained psychologists
- Support for community events providing social connection and mental health promotion opportunities for farmers, farming families and farming communities
- Distribution of mental health resources and support information.

For more information visit

www.farmerhealth.org.au/buildingfarmspirit.

Taking Care of Yourself

Mental Health and Wellbeing

There are many resources and services that can assist if you are feeling anxious, overwhelmed, worried or stressed. You can contact your GP or another local service such as Echuca Regional Health Wellbeing and Primary Mental Health. For those aged 12 – 25, there are organisations such as Headspace Echuca. Many workplaces and schools will have employee or student assistance programs. Support lines can also be contacted, such as Beyond Blue on 1300 224 636 or Lifeline on 131 114. For more information, scan the QR code.



Don't Wing it with Mosquitoes

Mosquitoes bite and can spread many diseases so cover up by wearing long, loose-fitting, light-coloured clothing and frequently apply mosquito repellent that contains picaridin or DEET.



For more information

visit the Victorian Government Department of Health website www.betterhealth.vic.gov.au.



GIVIT – How to Help Others

Emergency Management Victoria has partnered with GIVIT, a national online not-for-profit organisation that connects donors and charities to make sure people and communities get what they need. GIVIT supports more than 4,000 charities as well as hundreds of local neighbourhood community centres, schools and community groups. If you would like to consider GIVIT to support Campaspe's flood-impacted communities, please visit www.givit.org.au.

Waste Services

Household Flood-Affected Waste

Council's eight transfer stations are still accepting household flood waste free of charge. This is at the discretion of the operator.

The opening hours of the Echuca Transfer Station are:

Monday – Saturday: 8.00am – 4.45pm

Sunday: 10.00am – 3.45pm

Opening hours for all transfer stations can be found on Council's website www.campaspe.vic.gov.au.

Building Waste

Residential quantities of building waste (less than three cubic metres) may be taken by residents to any of Council's resource recovery centres. For more information please visit Council's website www.campaspe.vic.gov.au.

Commercial Flood Waste

The Commercial Flood Waste Facility located at Mt Scobie does not accept commercial waste from builders engaged privately or by insurance companies.

Council recommends that commercial operators (with over three cubic metres waste in large trucks and tippers) contact a local landfill (eg., Moama Landfill [Murray River Council], Shepparton [Cosgrove Landfill] or Patho Landfill) for disposal options. Please note: Patho Landfill only accepts trucks that are equal to, or larger than, a light rigid while Moama and Shepparton (Cosgrove) Landfills accept flood waste over three cubic metres and any truck size is accepted. Victorian Landfills (Patho and Cosgrove) will accept eligible flood waste until 2 May 2023.

Free Sandbag Removal for Residential and Commercial Properties

With the Victorian Government's free sandbag removal program now ended, Council is offering a free service for residential and commercial properties until mid-April. To take advantage of this service, please register by 14 April through Council's website at www.campaspe.vic.gov.au/flood or click on the QR code.



Before registering for the service, please place sandbags on your nature strip or nearest public property, away from fences, walls and other assets that may be damaged during sandbag removal. Please note that Council representatives are unable to come onto private property to remove the sandbags.

Sandbags will then be removed in a coordinated approach across the shire.



Recovery Hotline

For information on clean up services, temporary accommodation, and mental health and wellbeing support call 1800 560 760.



Council Information

For the latest news and information on flood recovery, including previous community recovery newsletters, visit www.campaspe.vic.gov.au/flood.