

WARANGA BASIN FISH HABITAT INSTALLATION PROJECT

The Waranga Basin Fish Habitat Installation Project will install native timber fish habitat in Waranga Basin to support the current high-quality Redfin fishery and an enhanced recreational fishery for Golden perch (*Macquaria ambigua*).

The habitat installation is being coordinated by the Goulburn Valley Association of Angling Clubs (GVAAC), funded from a Recreational Fishing License grant and will be supported by the VFA's stocking of 750,000 Golden perch fingerlings over three years.

HABITAT PLAN

GVAAC, supported by The Wedge Group, have developed, and consulted on a detailed plan to install native timber habitat into Waranga Basin.

FISH PRODUCTION AND AGGREGATION

- Increase primary production – biofilms, algae
- Feeding, cover and spawning for prey – small fish, macroinvertebrates (yabbies, bugs etc...)
- Feeding and cover for stocked Golden perch fingerlings (better survival and growth rate)
- Aggregation areas for adult predators - holding, migrating, feeding.



DESIGN CONSIDERATIONS

- Material types
- Amenity values
- Material availability and Cost
- Anchoring requirements
- Life span
- Transport and storage
- Safety in design
- Maintenance requirements
- Deployment equipment and labour
- Installation timeframes
- Staging areas



HABITAT DESIGN

Habitat Selection Criteria

- Natural, readily available
- Stored/Assembled close to installation site
- Easily assembled
- Deployed with trailable vessel or barge
- No impact on GMW operations

Preferred Habitat Solution

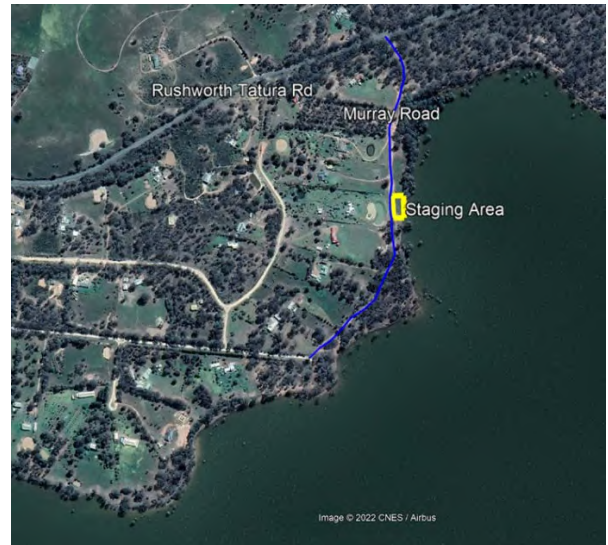
- Native timber brush piles and larger woody debris
- Fixed to a precast concrete anchor post (220kg)
- Posts will also anchor marker buoys identifying each site

“By installing the right habitat and diversifying the species on offer, we think Waranga Basin will become one of the best inland recreational fisheries in Victoria” -Roland Huber (Chair GVAAC)

SITE SELECTION

Site Selection Criteria

- Operating levels
- Access for boat and land-based fishers
- Climatic conditions
- Navigation hazards
- Existing habitat
- Fish behaviour
- Fishery characteristics
- Lake bed topography



INSTALLATION PLANNING

- GMW approvals granted
- Works tendered and awarded to the team at Xtreme Marine, Echuca
- Installation is scheduled for October 2023
- Ongoing work with:
 - Timber Supply
 - Adjoining landholder / stakeholder engagement

TIMBER SUPPLY

- Campaspe Shire Council are providing a significant contribution as part of their Rushworth Rail Trail Project (11km, \$3M)
- Native vegetation required to be removed as part of the project will be delivered to the Murray Rd staging area
- These works have been recently awarded
- Additional timber will likely be required

ARE YOU KEEN TO HELP OUT

Rec fisher volunteers are needed to assist with:

- Timber preparation
- Habitat assembly

If interested, please make contact.

CONTACTS

For more information or to put your name down to volunteer, please contact to following:

Roland Huber (GVAAC Chair)

0428 693 217

admin@nathaliaprinters.com.au

Karl Mathers (The Wedge Group)

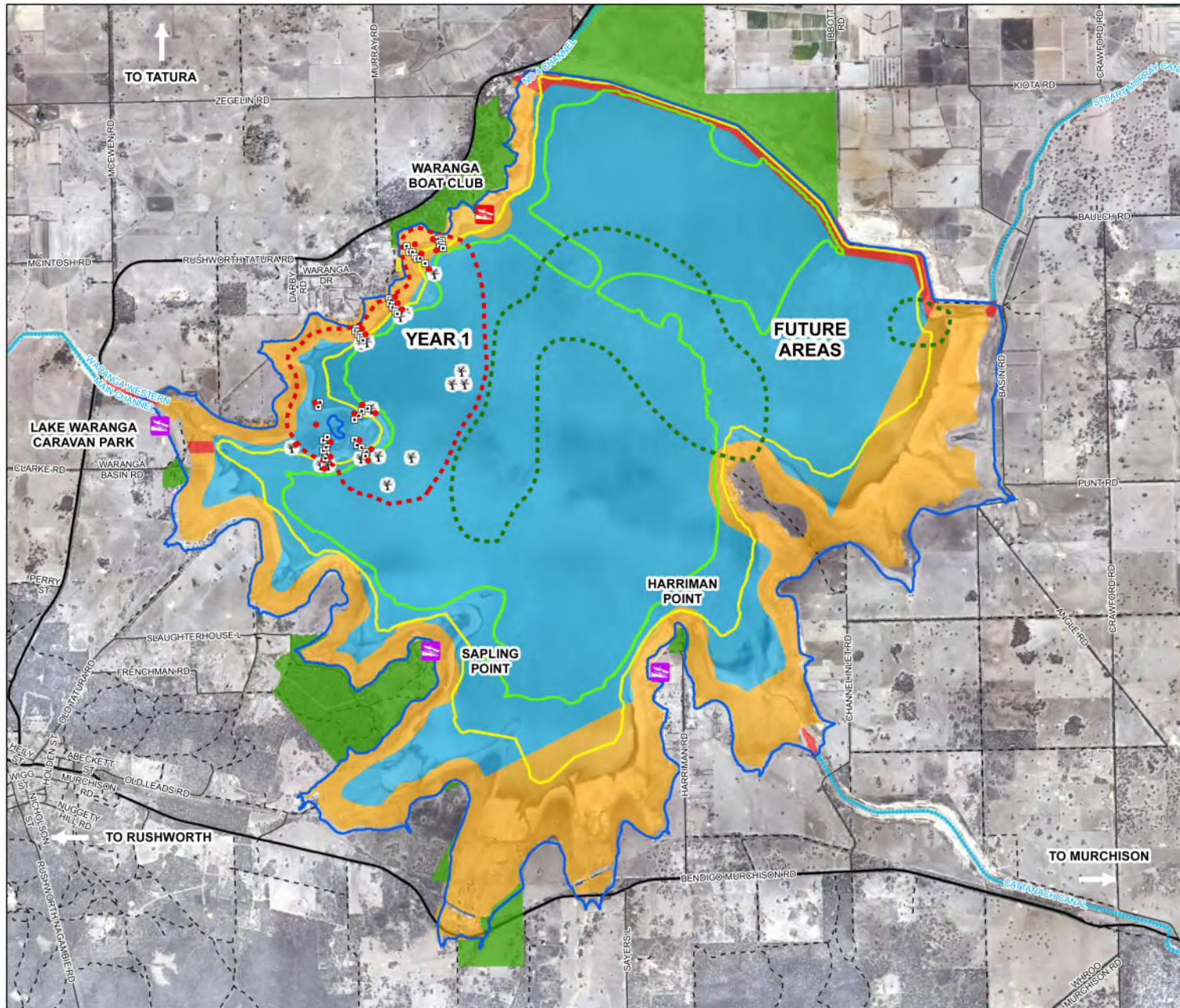
0423 378 803

karl.mathers@thewedgegroup.com.au

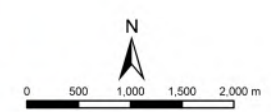


0 1 2 4
Kilometers

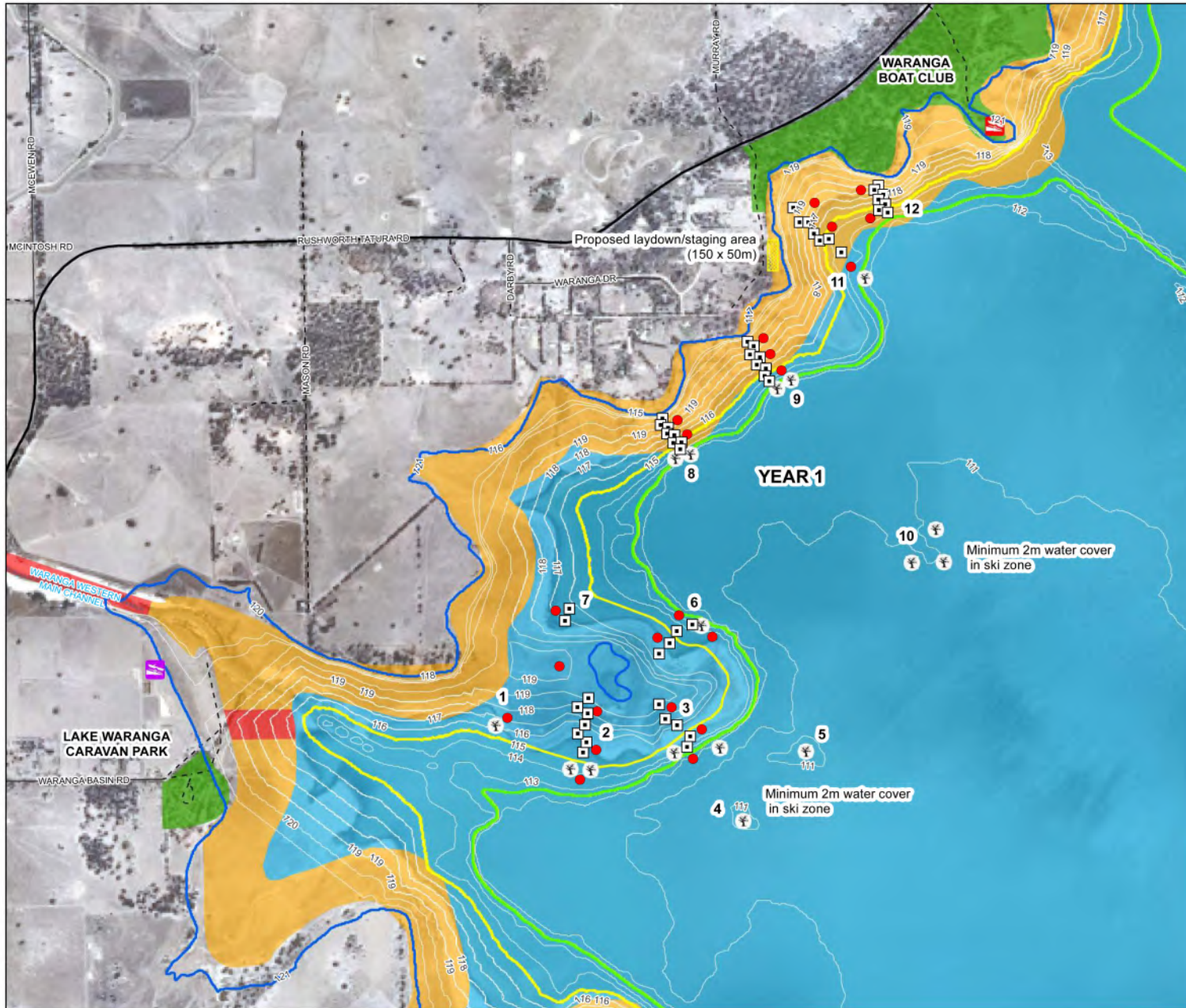
Legend
— Rail trail alignment



- Legend**
- Brushpile (8 Sites)
 - Snags/LWD (10 Sites)
 - Isolated Danger Mark (SL-B600 Bouy) (23)
 - Public Boat Ramp
 - Private Boat Ramp
 - ▬ Connecting Channel
 - ▭ Proposed Laidown/Staging Area
 - ▭ Full Supply Level (121.36 mAHD)
 - ▭ Lowest Level the Basin Attained (112.54 mAHD)
 - ▭ Minimum Operating Level (115.0 mAHD)
 - Public Land
 - Boat Restrictions**
 - No Boats
 - 5 Knot Boat Speed Restrictions
 - Unrestricted Boat Speed
 - Habitat Installation**
 - Year 1 Installation
 - Future Areas

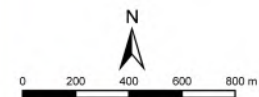


**WARANGA BASIN
 HABITAT INSTALLATION**



Legend

- Brushpile (8 Sites)
 - Snags/LWD (10 Sites)
 - Isolated Danger Mark (SL-B600 Bouy) (23)
 - Public Boat Ramp
 - Private Boat Ramp
 - Connecting Channel
 - Proposed Laydown/Staging Area
 - Full Supply Level (121.36 mAHd)
 - Lowest Level the Basin Attained (112.54 mAHd)
 - Minimum Operating Level (115.0 mAHd)
 - Public Land
- Boat Restrictions**
- No Boats
 - 5 Knot Boat Speed Restrictions
 - Unrestricted Boat Speed



The WEDGE Group

**WARANGA BASIN
 HABITAT INSTALLATION
 YEAR 1**