

From Council:

Campaspe West Recovery Update

April 2023



For all enquiries and requests, contact Council on 1300 666 535.

Advancing Flood Recovery Advocacy

Council is working hard to advance Campaspe's flood recovery advocacy efforts with the Victorian Government. In late March, Mayor Cr Rob Amos, Chief Executive Officer Pauline Gordon and Director Emergency Management Shannon Maynard met with the Minister for Emergency Services The Hon. Jaclyn Symes and Emergency Recovery Victoria's Executive Director Regional Coordination and Operations Sue Jamieson in Rochester.

A range of issues were covered, including the need for continued funding for community wellbeing and repair of community infrastructure as well as support and resources to improve our shire's flood preparedness, mitigation measures and response capability.

While no commitments were given by the minister on the day, we hope these discussions and our ongoing advocacy lead to more positive announcements in the future.

2022-2023 Rates Relief Package

Great news for ratepayers! Council has approved a rates relief package in 2022-2023 for properties impacted by the October 2022 flood event.

This package is the most equitable economic way Council can help ratepayers and is a key part of a broad range of resources and supports Council has put in place to help those impacted by the floods.

If you believe your property was flood-impacted and do not receive a letter about rates relief from Council by the end of April, please contact Council on 1300 666 535 or via email shire@campaspe.vic.gov.au.

For more information please visit www.campaspe.vic.gov.au/flood.

Primary Producer and Landholder Grants

The following grant applications close on **Thursday, 13 July**:

- **Primary Producer Recovery Grants:** Up to \$75,000 grants to cover the cost of recovery and get businesses up and running again. Note: This replaces the \$10,000 Primary Producer Flood Clean-Up, Relief Grants announced on 19 October. Producers that have received a Primary Producer Flood Clean-Up Relief Grant of \$10,000 can now apply for up to a further \$65,000 under the Primary Producer Recovery Grant, bringing the total to \$75,000.
- **Rural Landholder Grants:** Up to \$25,000 grants to cover the costs of disaster impacts for small-scale producers.
- **Primary Producer Concessional Loans:** Up to \$250,000 to restore or replace damaged equipment and infrastructure, or to cover the short-term business expenses.
- **Primary Producer Transport Subsidies:** Up to \$15,000 to support the transport of emergency fodder or stock drinking water, and the movement of livestock.

For more information or to apply for support, visit <https://www.ruralfinance.com.au>.



(l-r) Campaspe Shire Council Director Emergency Management Shannon Maynard, Mayor Cr Rob Amos, Minister for Emergency Management The Hon. Jaclyn Symes, Campaspe Shire Council Chief Executive Officer Pauline Gordon and Emergency Recovery Victoria's Executive Director, Regional Coordination and Operations Sue Jamieson.

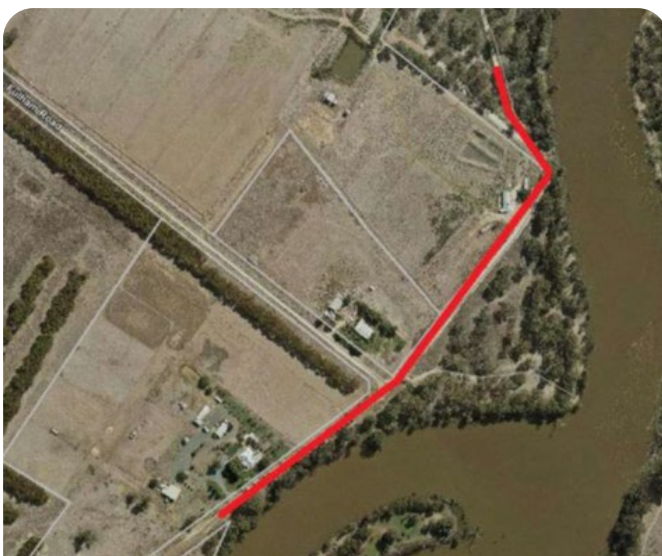
Removal of Torrumbarry Temporary Levee

Works have started to remove the temporary levee on Headworks and Young roads, Torrumbarry, installed as part of the October 2022 floods. Works will also include reinstatement of the pre-existing levee and associated drainage structures, and repairs to impacted gravel and sealed roads. Notification letters have been sent to nearby properties.

Traffic management will be in place during the works which are expected to be completed in May. Some traffic delays may be experienced; however, we will endeavour to minimise potential disruptions as much as possible.



Section of levee being removed from Headworks Road



Section of levee being removed from Young Road

Keep Reporting Flood Issues!

While Council has a good picture of the devastating impacts of the floods across the shire, we still need the help of our community to report issues to Council as soon as possible. If you see damaged Council infrastructure, such as roads and paths or stockpiles of sandbags and dirt for example, that you think may not yet be reported, please contact us on 1300 666 535. Council is doing a significant amount of work to repair the damage caused by this unprecedented event, and reports from the community helps us to allocate resources and prioritise jobs. Reporting issues to Council also helps us to seek appropriate external funding so we can respond swiftly to things that need attention. Thank you to everyone who has already reported issues to us – we are working through the list daily!

Free Sandbag Removal for Residential and Commercial Properties

Council is offering a free sandbag removal service for residential and commercial properties. To take advantage of this service, please register by 24 April through Council's website at www.campaspe.vic.gov.au/flood or click on the QR code.

Before registering for the service, please place sandbags on your nature strip or nearest public property, away from fences, walls and other assets that may be damaged during sandbag removal. Please note that Council representatives are unable to come onto private property to remove the sandbags.



Sandbags will then be removed in a coordinated approach across the shire.

Campaspe West Community Recovery Committee

The Campaspe West Community Recovery Committee (CWCRC) continues to work closely and meet regularly with Council and key agencies involved in flood recovery. The committee has now developed a flood recovery plan that reflects priorities of Gunbower, Torrumbarry and surrounding communities. Among these priorities include addressing the immediate support needs of the community, medium-term improvements to, and reopening of, forests, and longer-term levee discussions and advocacy. The CWCRC is committed to liaising with and keeping the community informed of progress.

Parks Victoria Update

Parks Victoria continues to assess, make safe and re-open areas. Since the weekend of the Southern 80, ParksVic has opened Gunbower National Park and Murray River Reserve on Gunbower Island. Some areas will remain closed as work continues to make them safe. To find out the latest information on closures, please check the Parks Victoria website at www.parks.vic.gov.au/places-to-see/parks/river-murray-reserve (tip click the orange square to see the reported issues).

Please note that although areas are opening, access tracks may still be in poorer condition than normal so 4WD vehicles are recommended. Please take care and avoid further damage by staying out of any wet areas.



Before



After

Repairs to Farley Bend, just off Glynn Road, Torrumbarry.

Support for Business

Business Victoria provides online assistance to business owners with a range of tools and templates to help operate and grow their business.

Disaster resilience for business toolkit

A toolkit to help your business survive disasters is available at <https://business.vic.gov.au/tools-and-templates/disaster-resilience-for-business-toolkit>

Tools and templates

Use the Type and Topic filters at <https://business.vic.gov.au/tools-and-templates> to find practical tools, templates and calculators to help you start and run your business.

The Australian Small Business Advisory Services (ASBAS) Digital Solutions Program has re-opened and is a great source of information, guidance and coaching for business owners who want to leverage digital services to grow their business. The program offers up to four hours of one-on-one tailored support as well as unlimited attendance at group workshops or webinars. For more information visit <https://courses.melbourneinnovation.com.au/>

Urgent Road Works

Emergency repair works have recently been completed at the following locations:

- Headworks Road
- Weir Road
- Muller Road
- Brereton Road
- Roads in cow swamp area

Works are expected to be undertaken in the next few weeks at the following locations:

- removal of the temporary levee bank from sections on Headworks road and Young Road
- removal of sandbags stockpiled at CFA shed
- repair of culvert at McMahon Road.



Before



After

Weir Road



Before



After

Brereton Road



AgBiz Assist

AgBiz Assist supports rural and regional businesses, farmers and communities to make informed decisions about their future. Through the Rural Financial Counselling Service (RFCS) Victoria North East, the service provides no-cost, intensive, individualised, confidential and independent support to primary producers, fishing enterprises, forestry growers and small businesses experiencing or at risk of financial hardship. The RFCS service can assist in identifying opportunities for improvement, adjustment or change through financial counselling, planning and support services.

Support for flood recovery is easy to access. For more information call 1300 834 775, email info@agbizassist.org.au, visit www.agbizassist.org.au or drop into a local Recovery Hub.

Mental Health and Wellbeing

There are many resources and services that can assist if you are feeling anxious, overwhelmed, worried or stressed. You can contact your GP or another local service such as Echuca Regional Health Wellbeing and Primary Mental Health. For those aged 12 - 25, there are organisations such as Headspace Echuca. Many workplaces and schools will have employee or student assistance programs. Support lines can also be contacted, such as Beyond Blue on 1300 224 636 or Lifeline on 131 114. For more information, scan the QR code.



Waste

Household Flood-Affected Waste

Council resource recovery centres are still accepting household flood waste (under three cubic metres) free of charge, at the discretion of the operator. Below are your local centres:

Gunbower Resource Recovery Centre

4134 Murray Valley Highway (east of town)

Open Mondays from 1.00pm-4.00pm and Sundays from 9.00am-12noon

Echuca Resource Recovery Centre

510 McKenzie Road, Echuca

Open Monday to Saturday from 8.00am-4.45pm and Sundays from 10.00am-3.45pm

Lockington Resource Recovery Centre

1671 O'Donnell Road (corner Keane Road), Lockington

Open Wednesdays from 1.00pm - 4.00pm and Sundays from 1.00pm - 4.00pm

Building Waste

Residential quantities of building waste (less than three cubic metres) may be taken by residents to any of Council's resource recovery centres. For more information, please visit Council's website.

Commercial Flood Waste

The Commercial Flood Waste Facility located at Mt Scobie is no longer accepting commercial waste from builders engaged privately or by insurance companies.

Council recommends that commercial operators with over three cubic metres of waste in large trucks and tippers) contact a local landfill (e.g., Moama Landfill (Murray River Council), Shepparton (Cosgrove) Landfill or Patho Landfill) for disposal options. Please note: Patho Landfill only accepts trucks that are equal to, or larger than, a light rigid while Moama and Shepparton (Cosgrove) Landfills accept flood waste over three cubic metres and any truck size is accepted. Victorian Landfills (Patho and Cosgrove) will accept eligible flood waste until 2 May 2023

Recovery Hotline

For information on clean up services, temporary accommodation, and mental health and wellbeing support call 1800 560 760.

Council Information

For the latest new news and information on flood recovery, including previous community recovery newsletters, visit www.campaspe.vic.gov.au/flood.