

134688

LP134688  
EDITION 1  
APPROVED 4 / 8 / 80

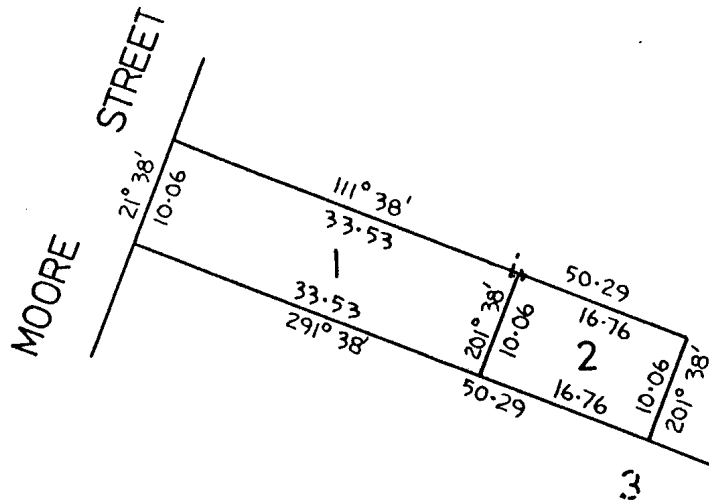
Y

<p>PLAN OF SUBDIVISION OF PART OF CROWN ALLOTMENT 4 SECTION 3<sup>A</sup> TOWNSHIP OF ROCHESTER PARISH: ROCHESTER WEST COUNTY: BENDIGO</p> <p>10 5 0 10 20 LENGTHS ARE IN METRES</p>	
--	--

TOWNSHIP  
Vol. 1608 Fol. 589

C/T. 1608/589

APPROVED  
4-8-1980



CONSENT OF COUNCIL	SURVEYORS CERTIFICATION
<p>July 80 4<sup>th</sup> J. P. Lamrakan S. B. Haines K. Jucker</p>	<p>I certify that this plan has been made by me and accords with Title and is mathematically correct, &amp; that the subdivision boundary has been marked on the ground Licensed Surveyor 18<sup>th</sup> June, 1980</p>

134688